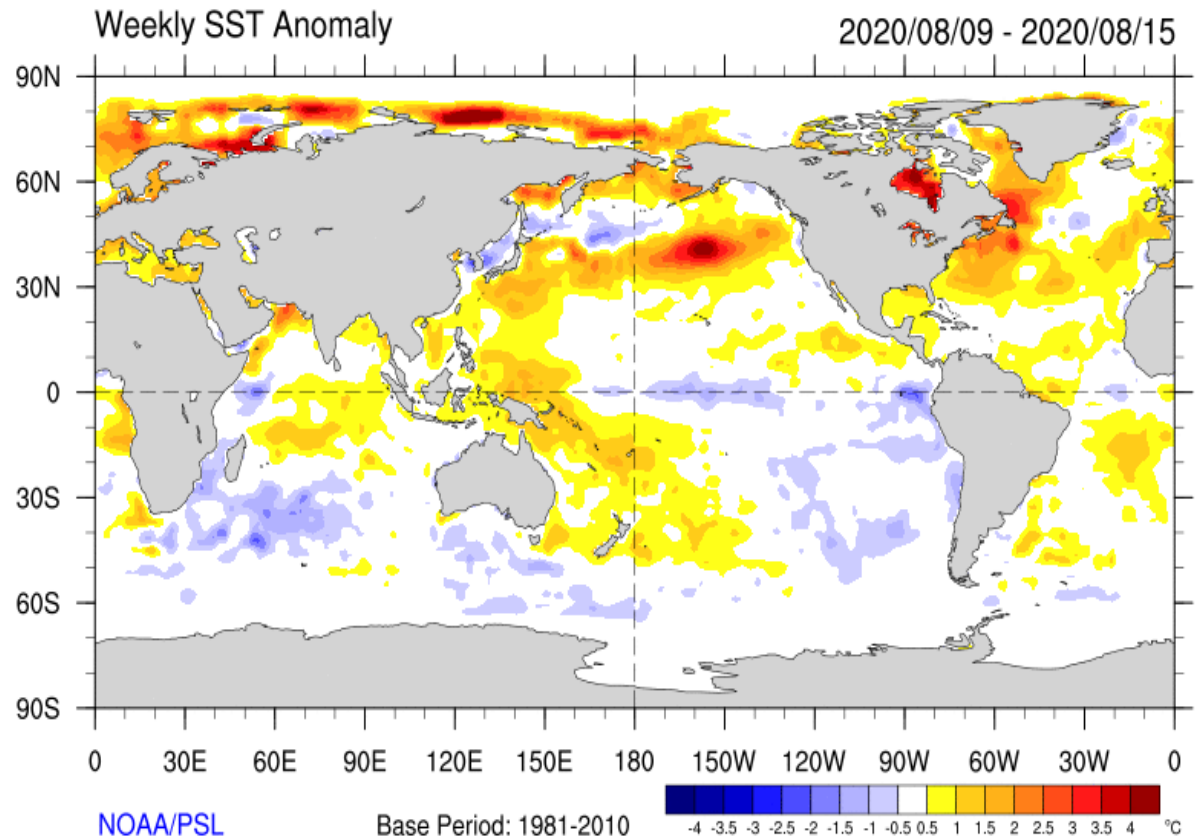
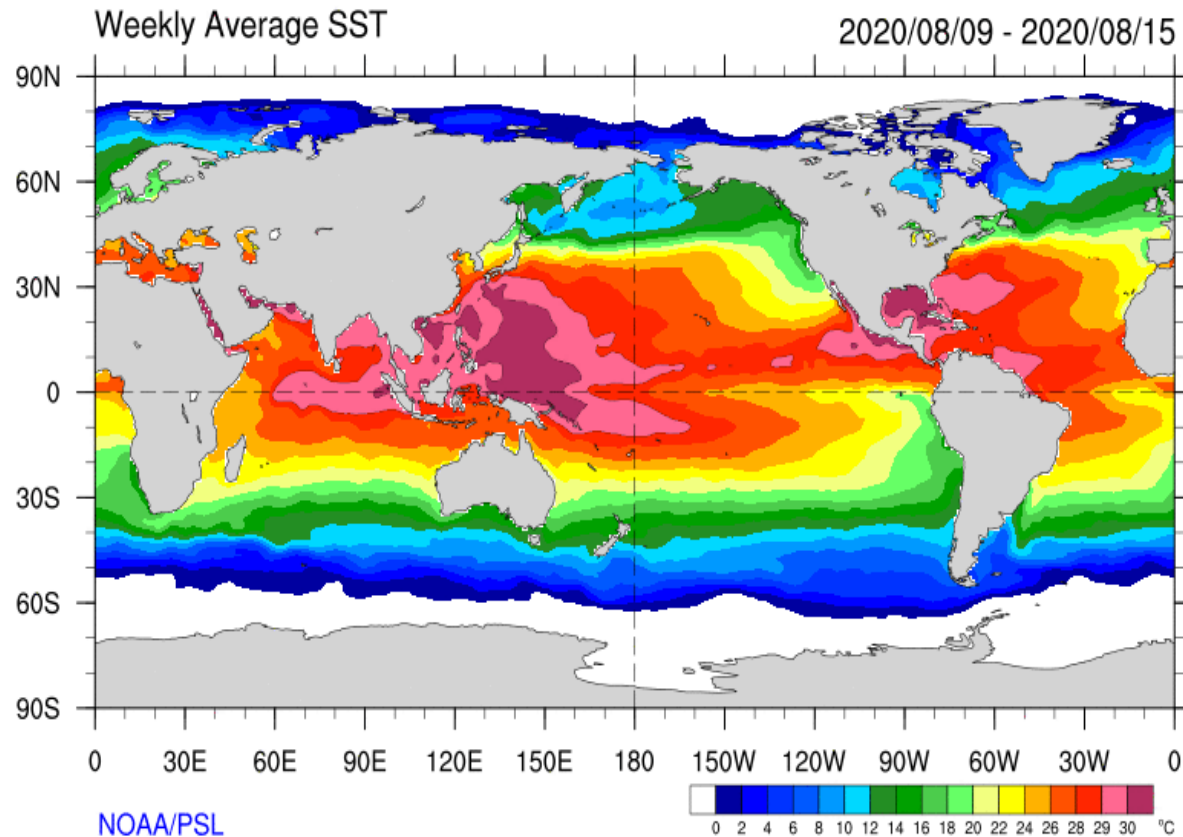


Monthly Regional Focus Group Session

Wednesday 19 August 2020

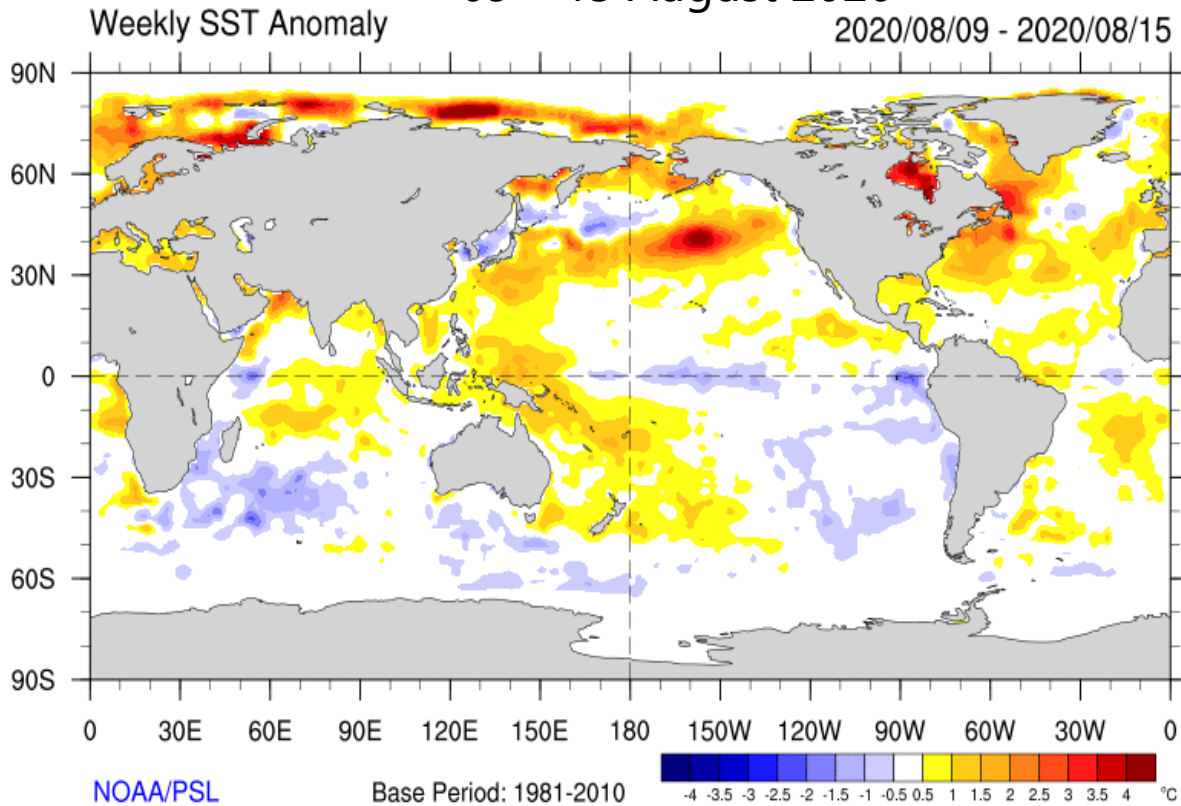
Sea Surface Temperature Anomalies (Last Week)



Deep Anomalies last longer:

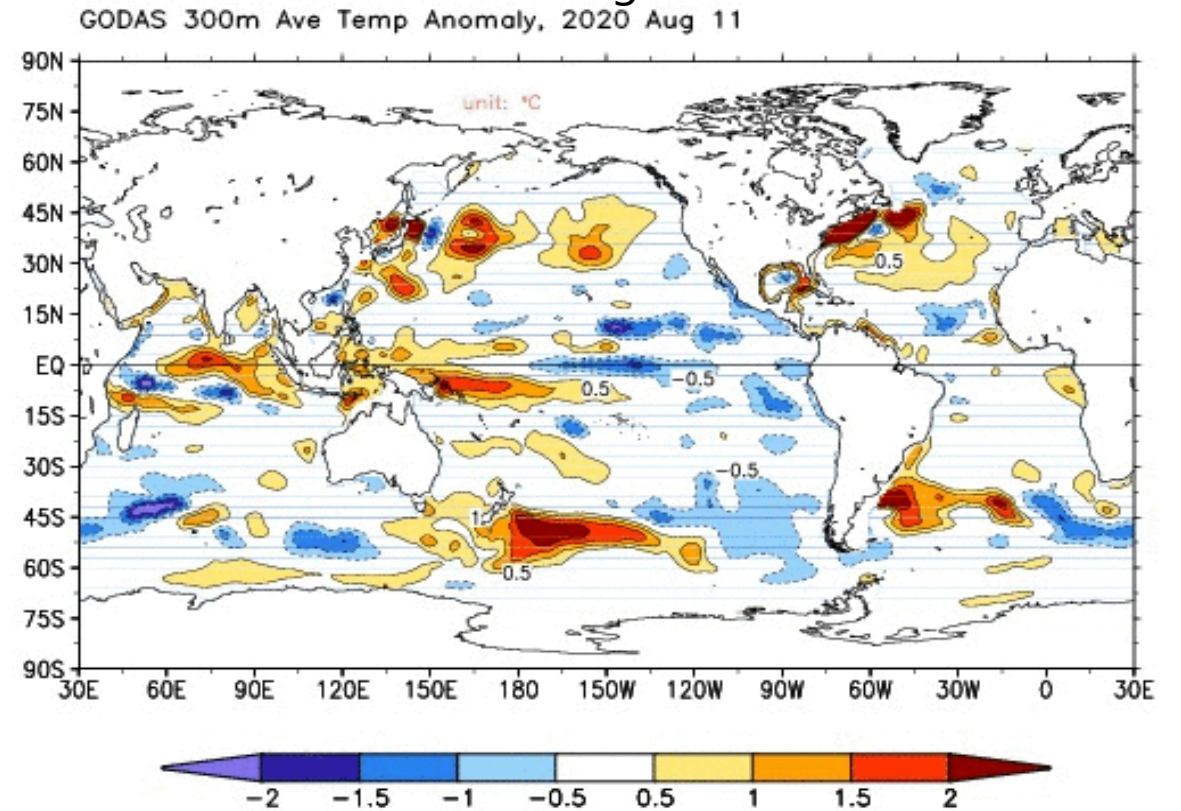
Sea Surface Temperature Anomaly

09 – 15 August 2020



Top 300-m Sea Temperature Anomaly

11 August 2020



Source: GODAS, CPC

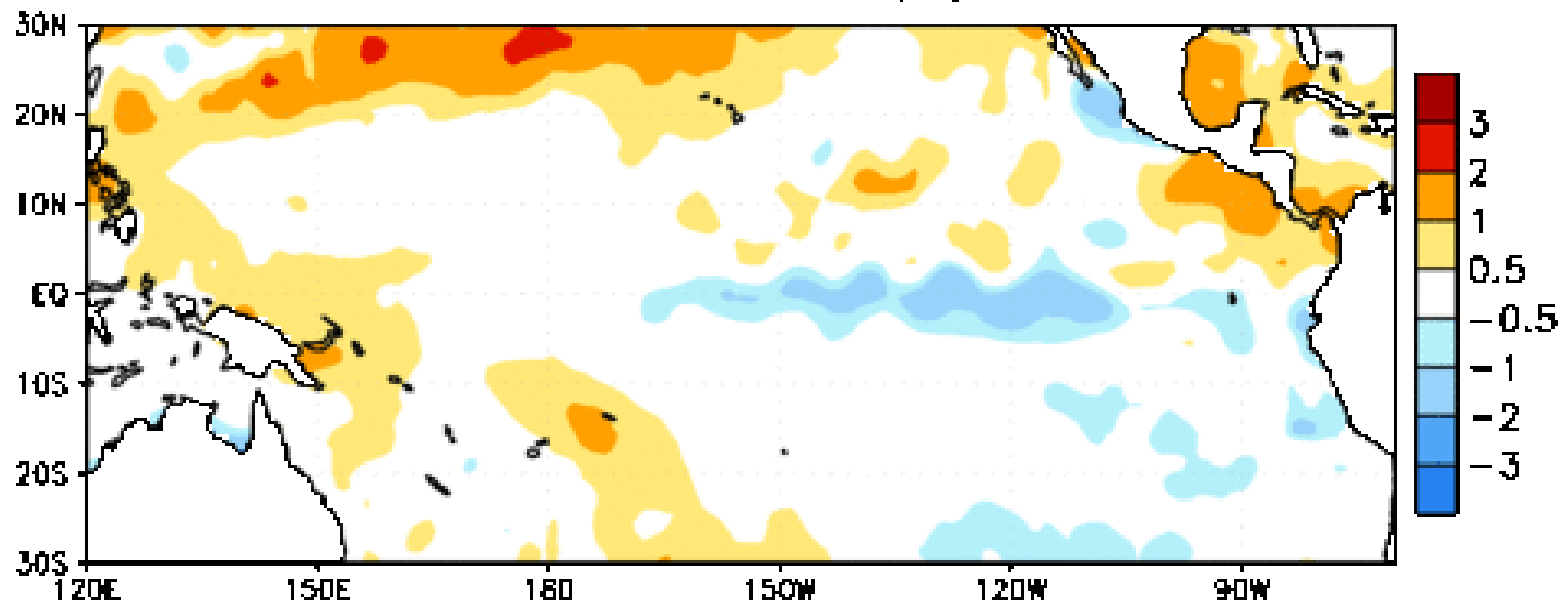
ENSO Neutral

La Niña Watch

- ENSO-neutral conditions are present.
- Equatorial SSTs are near-to-below average across the east-central and eastern Pacific Ocean. The tropical atmospheric circulation is consistent with ENSO-neutral.

Evolution

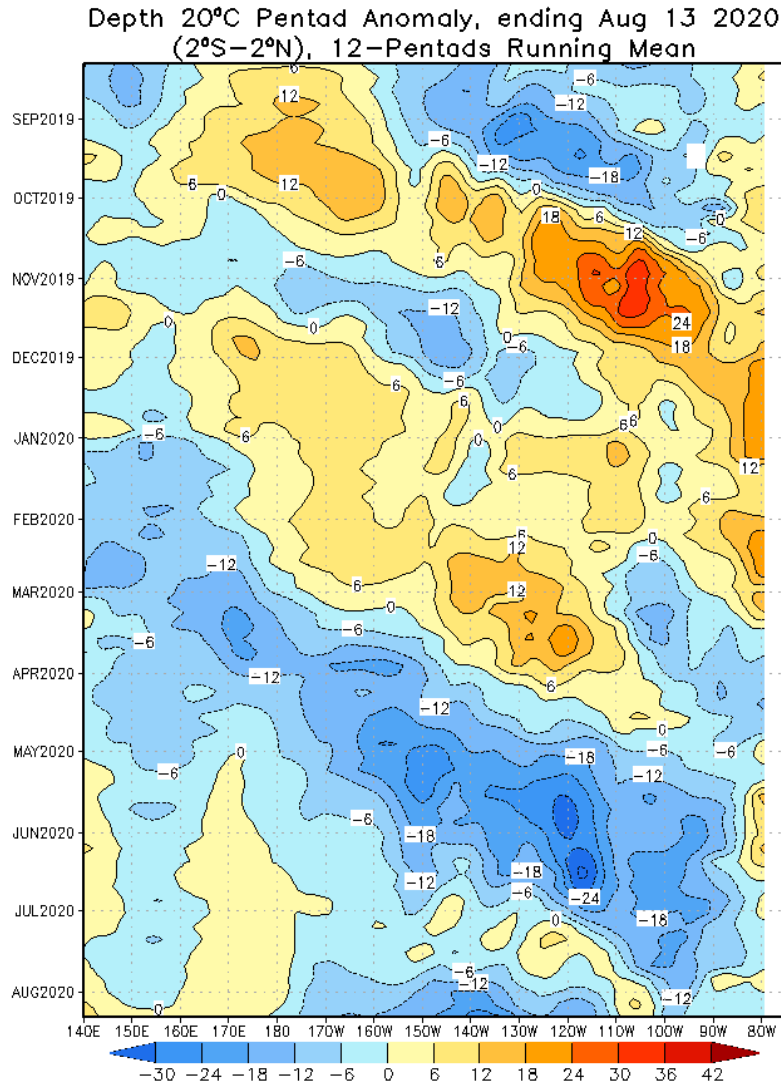
Week centered on 27 MAY 2020
SST Anomalies (°C)



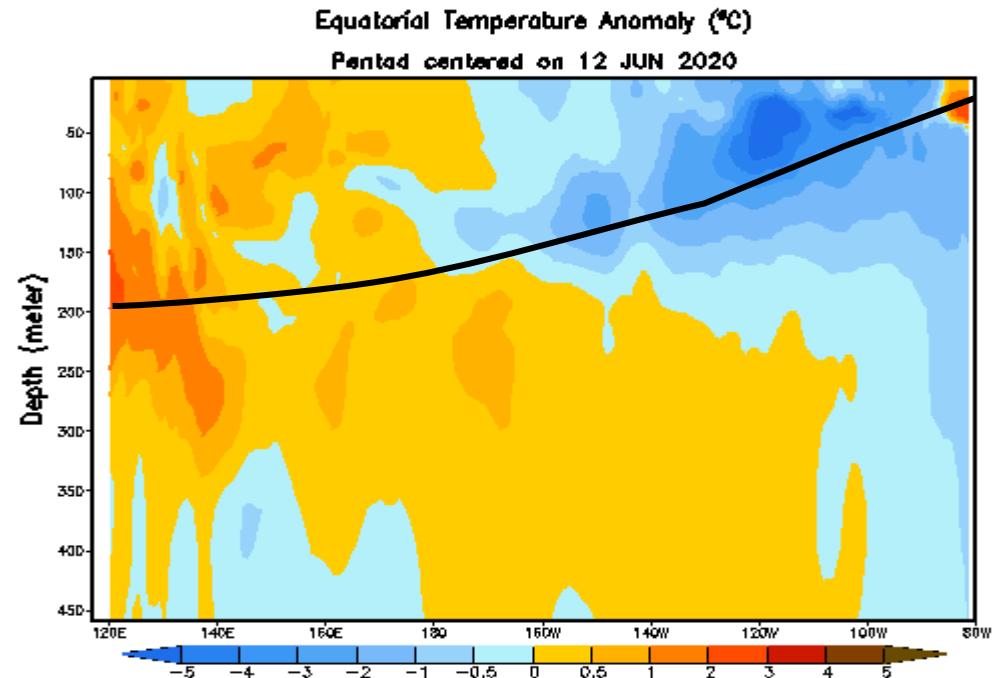
Source: CPC

ENSO

Hovmöller of thermocline depth anomalies



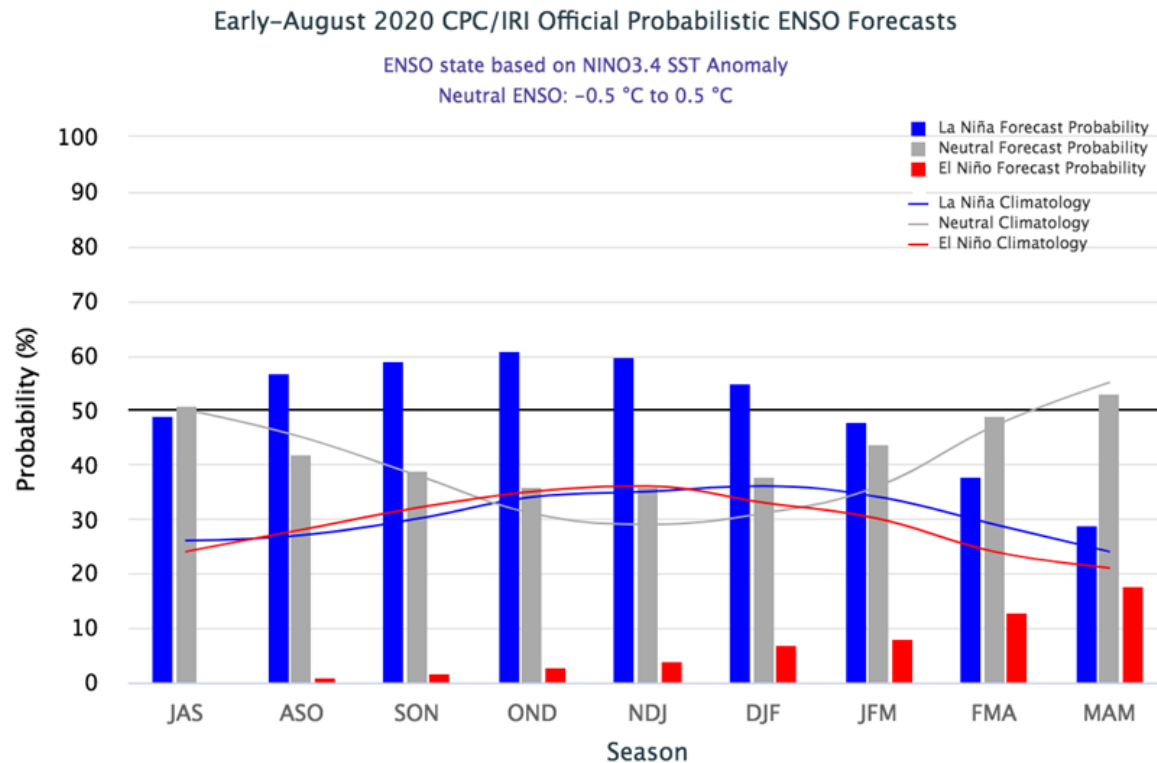
- Blues: Shallow thermocline = cooler
- Forecast: Another upwelling Kelvin wave might enhance surface cooling in September/October.



ENSO Outlook

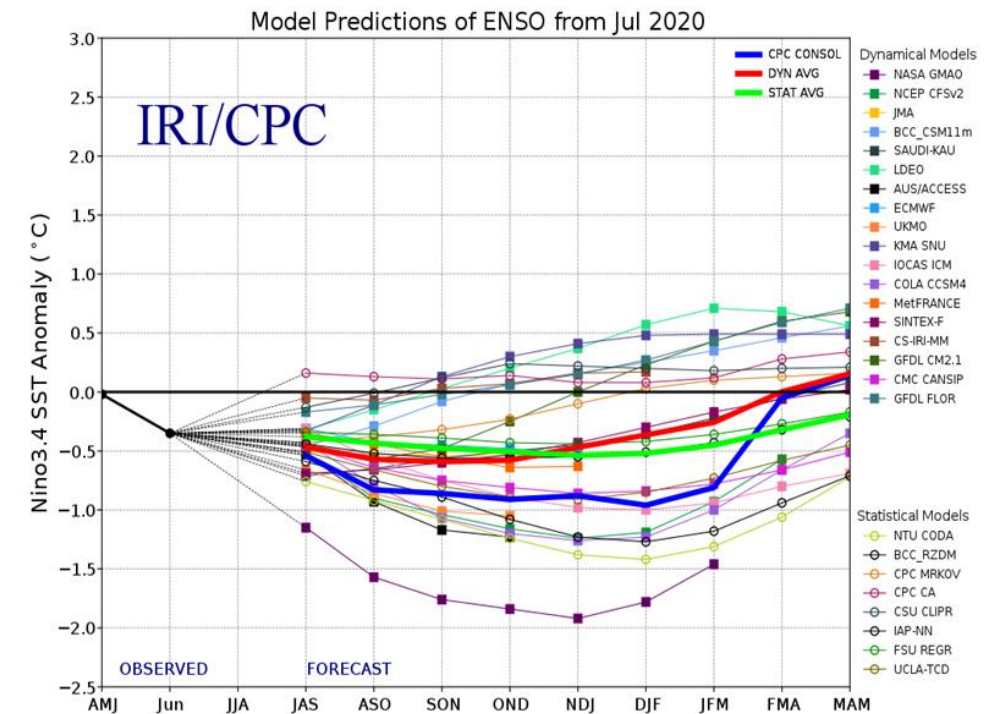
~60% chance of La Niña development during Northern Hemisphere fall 2020 and continuing through winter 2020-21 (~55% chance).*

CPC/IRI Probabilistic Forecast



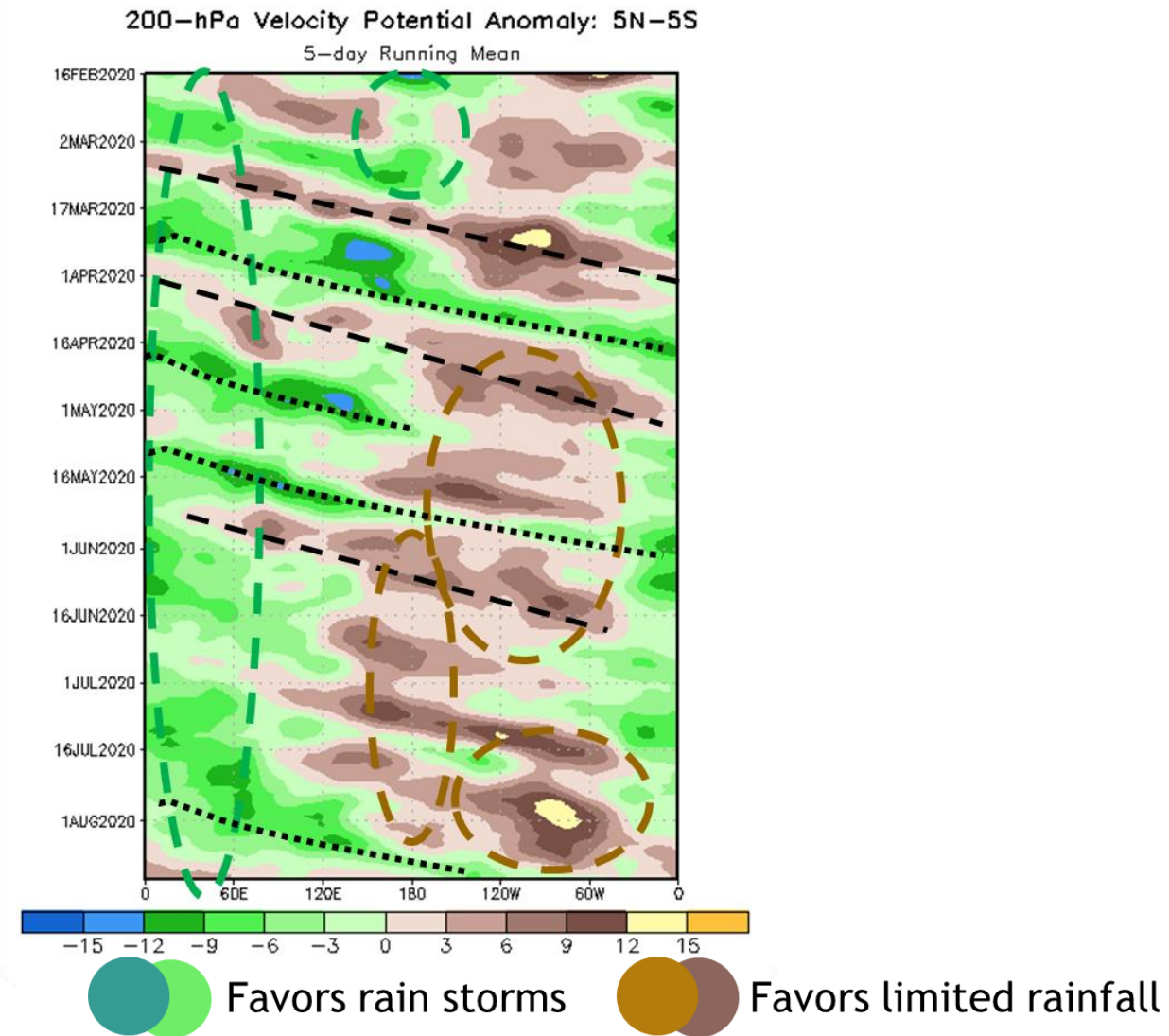
Source: CPC

IRI/CPC Dynamic Models

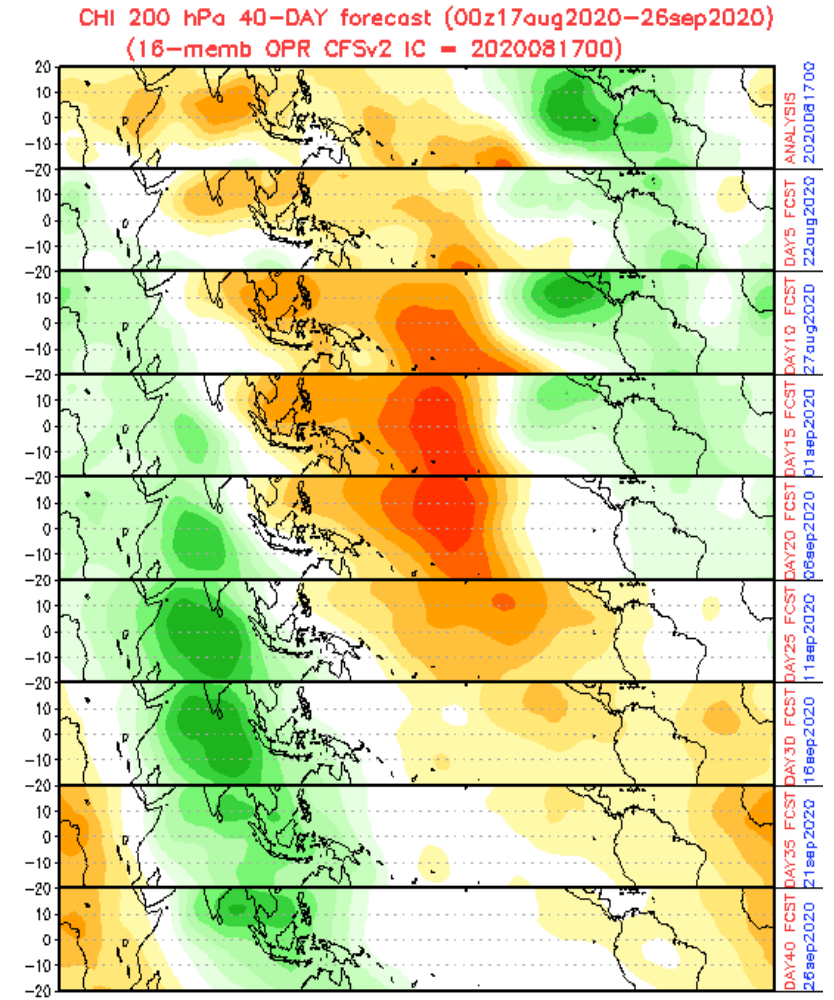
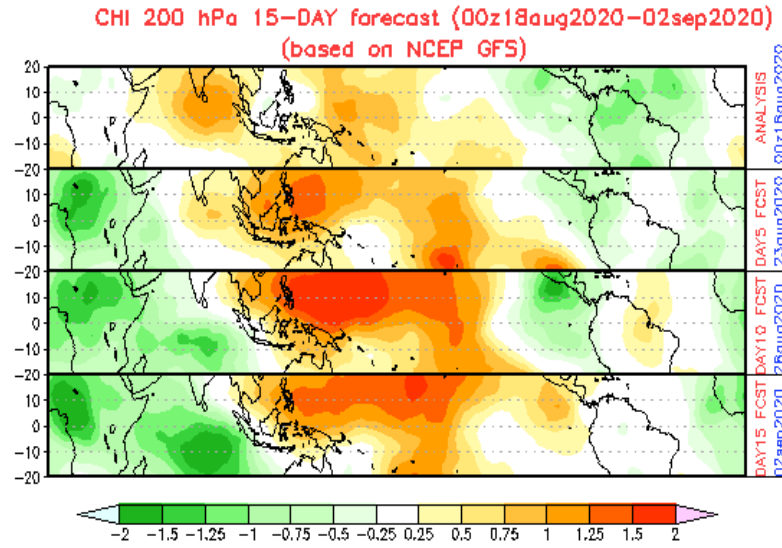
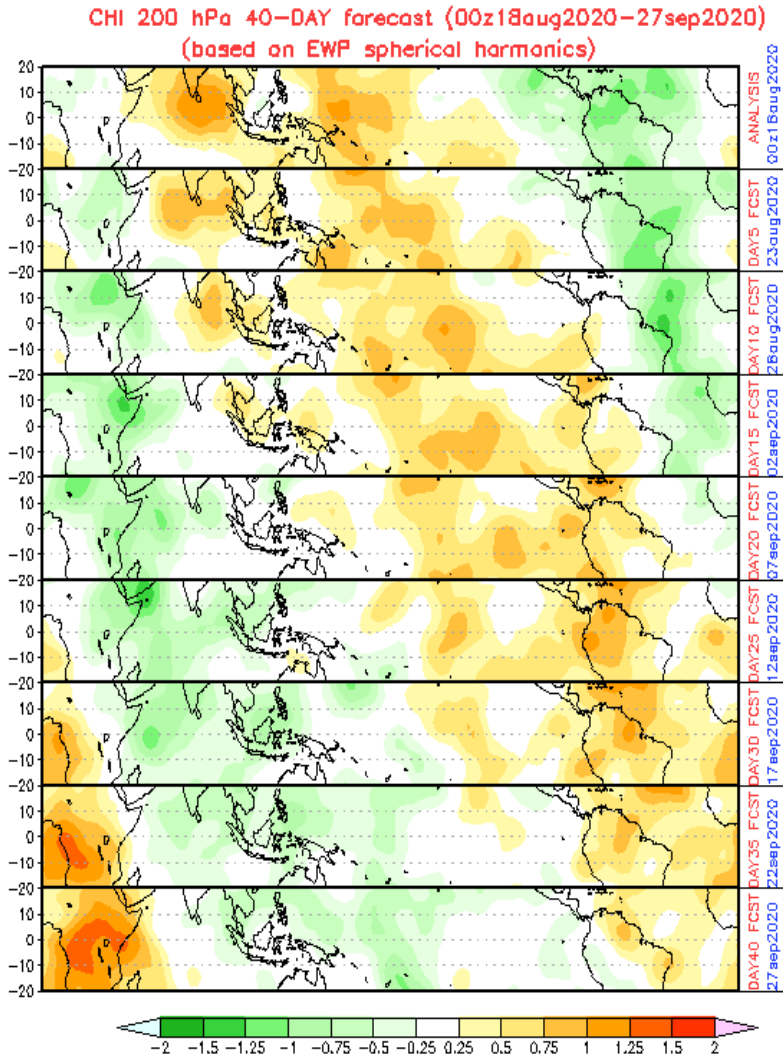


Source: IRI/CPC, 20 July

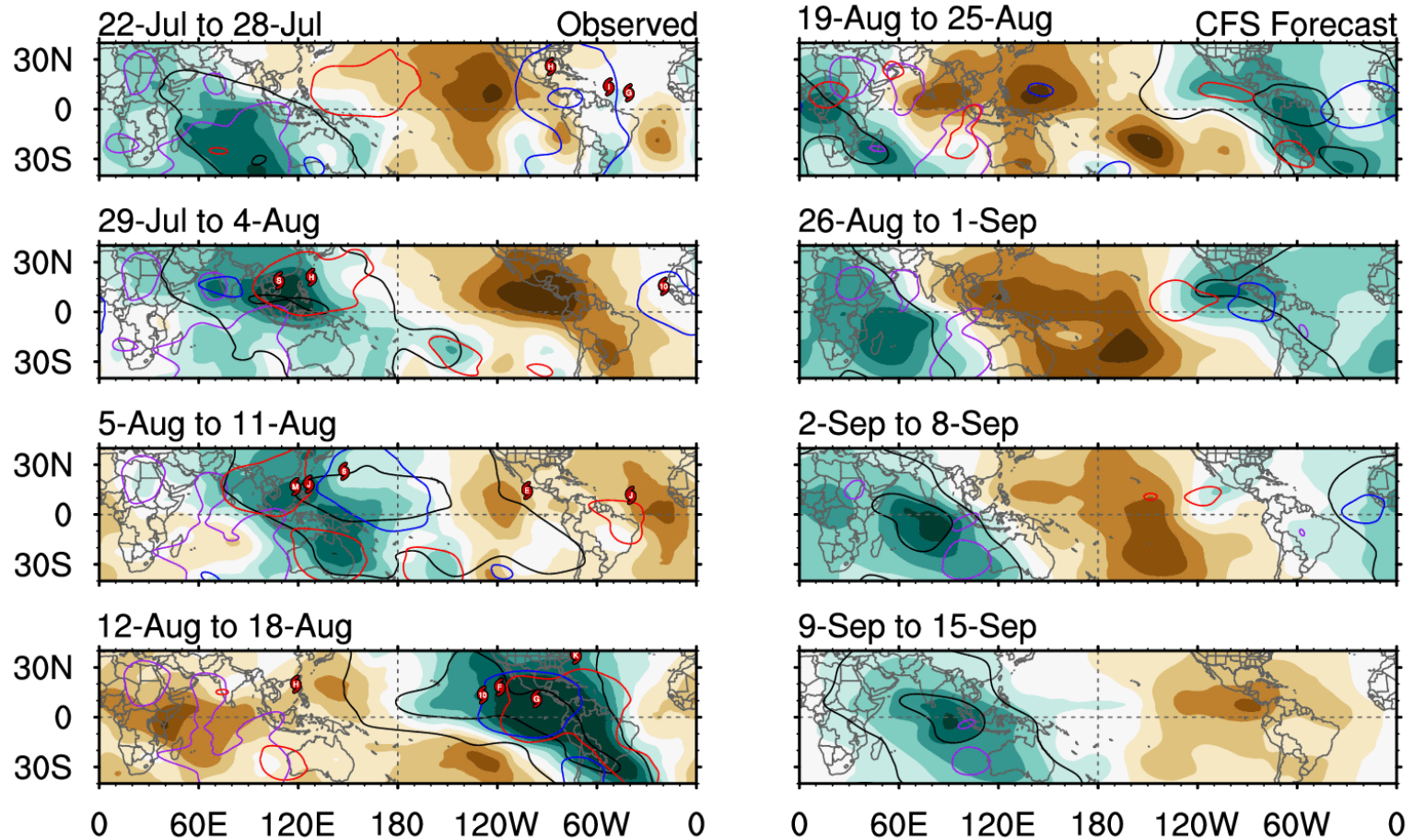
Madden-Julian Oscillation (MJO)



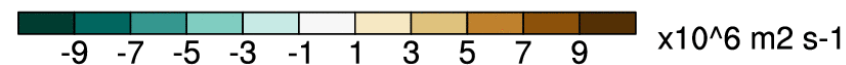
MJO Forecasts



MJO and Equatorial Tropospheric Waves CFS Forecasts



ncics.org/mjo



7-day CHI200 with CFS forecasts

Wed 2020-08-19 1131 UTC

— MJO — Kelvin x2
— Low — ER

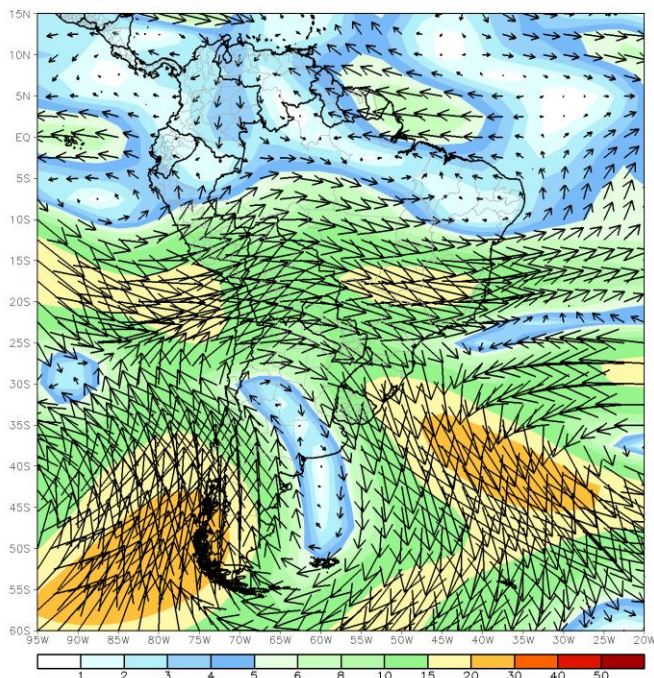
Contours at -2, -6 $\times 10^6 \text{ m}^2 \text{ s}^{-1}$

Carl Schreck
carl_schreck@ncsu.edu

Last week's anomalies for South America

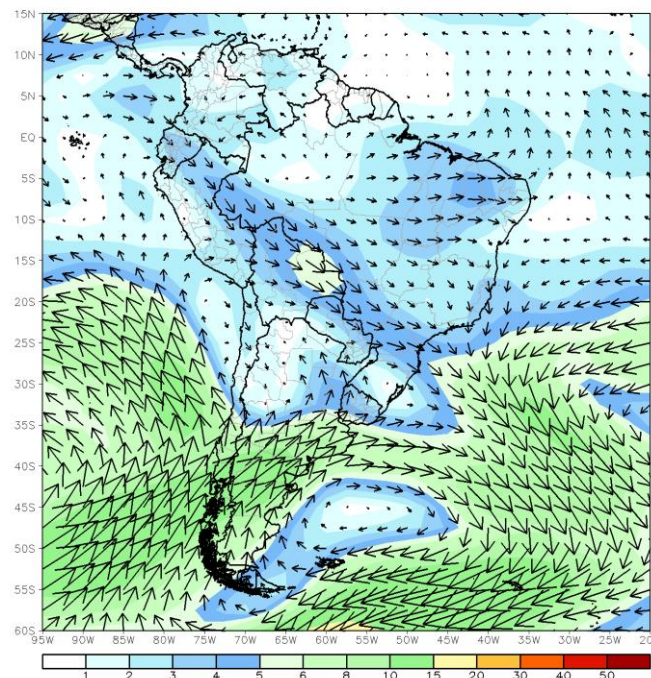
200 hPa Flow

CDAS 200mb 7-Day Mean Vector Wind Anomaly (m/s)
Period: 10Aug2020 - 16Aug2020



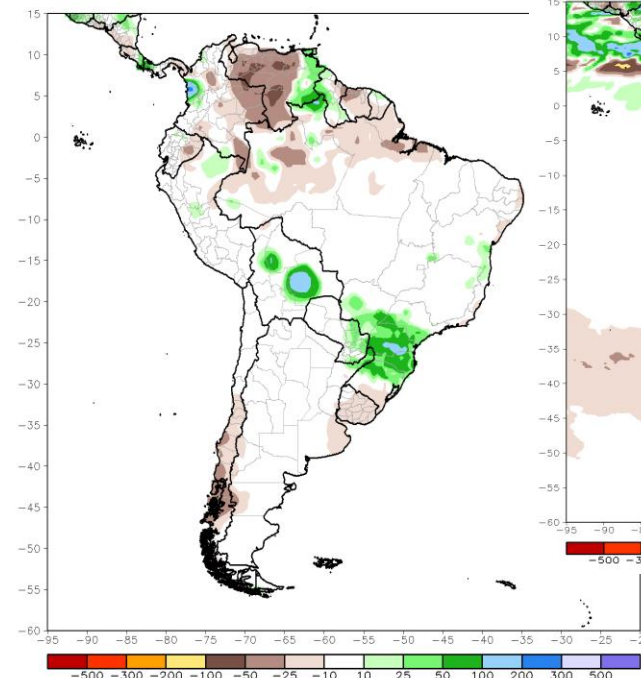
850 hPa Flow

CDAS 850mb 7-Day Mean Vector Wind Anomaly (m/s)
Period: 10Aug2020 - 16Aug2020

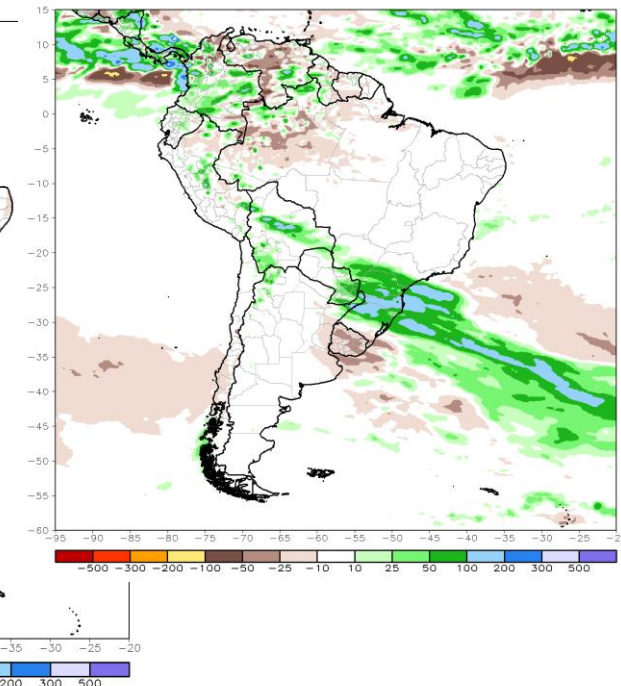


Rainfall

CPC Unified Gauge 7-Day Total Rainfall Anomaly (mm)
Period: 11Aug2020 - 17Aug2020



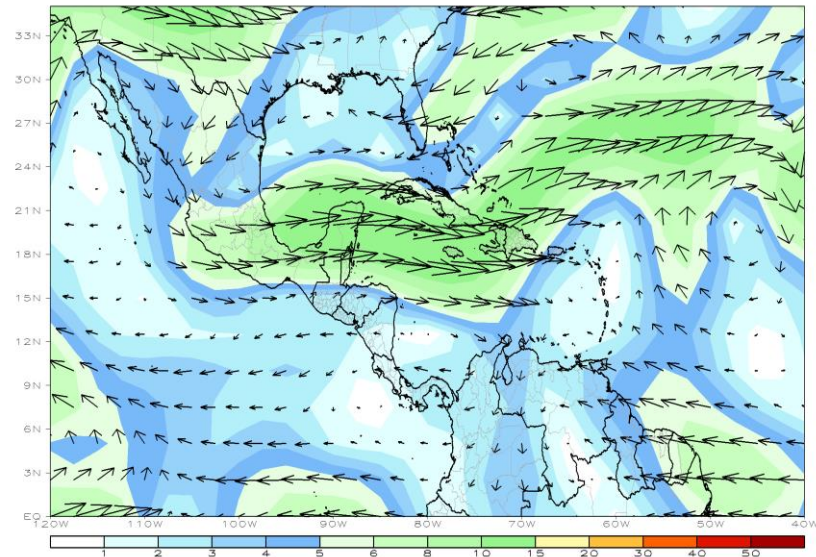
CMORPH 7-Day Total Rainfall Anomaly (mm)
Period: 10Aug2020 - 16Aug2020



Last Week's anomalies for the Tropical Americas

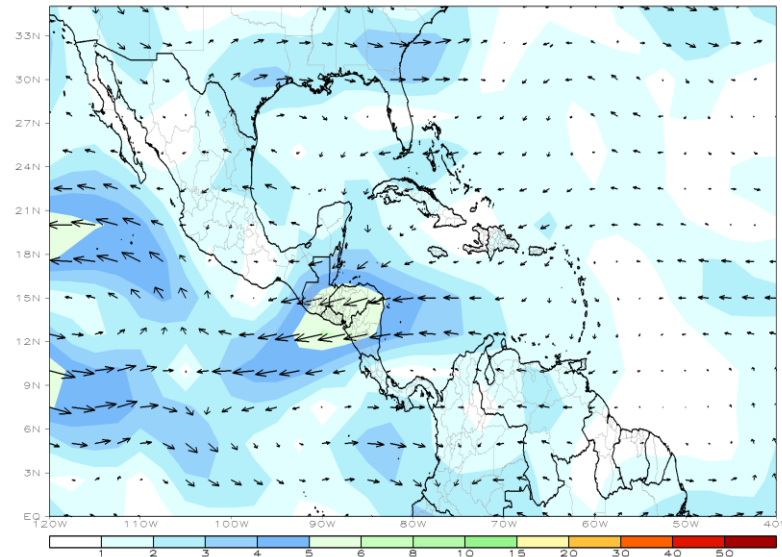
200 hPa Flow

CDAS 200mb 7-Day Mean Vector Wind Anomaly (m/s)
Period: 10Aug2020 - 16Aug2020



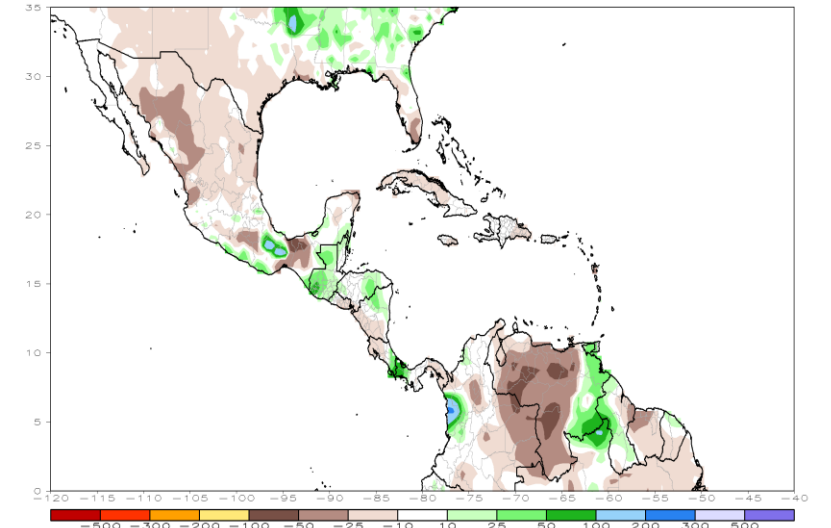
850 hPa Flow

CDAS 850mb 7-Day Mean Vector Wind Anomaly (m/s)
Period: 10Aug2020 - 16Aug2020

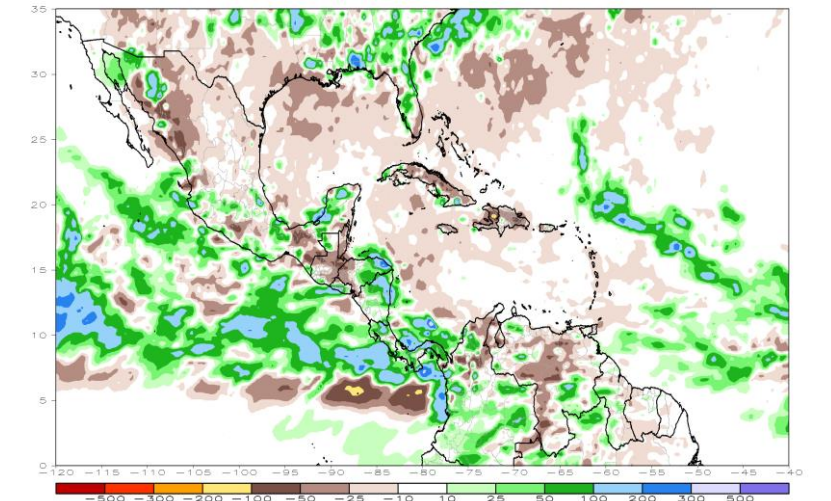


Rainfall

CPC Unified Gauge 7-Day Total Rainfall Anomaly (mm)
Period: 11Aug2020 - 17Aug2020



CMORPH 7-Day Total Rainfall Anomaly (mm)
Period: 10Aug2020 - 16Aug2020



¡Gracias!

Thank you!