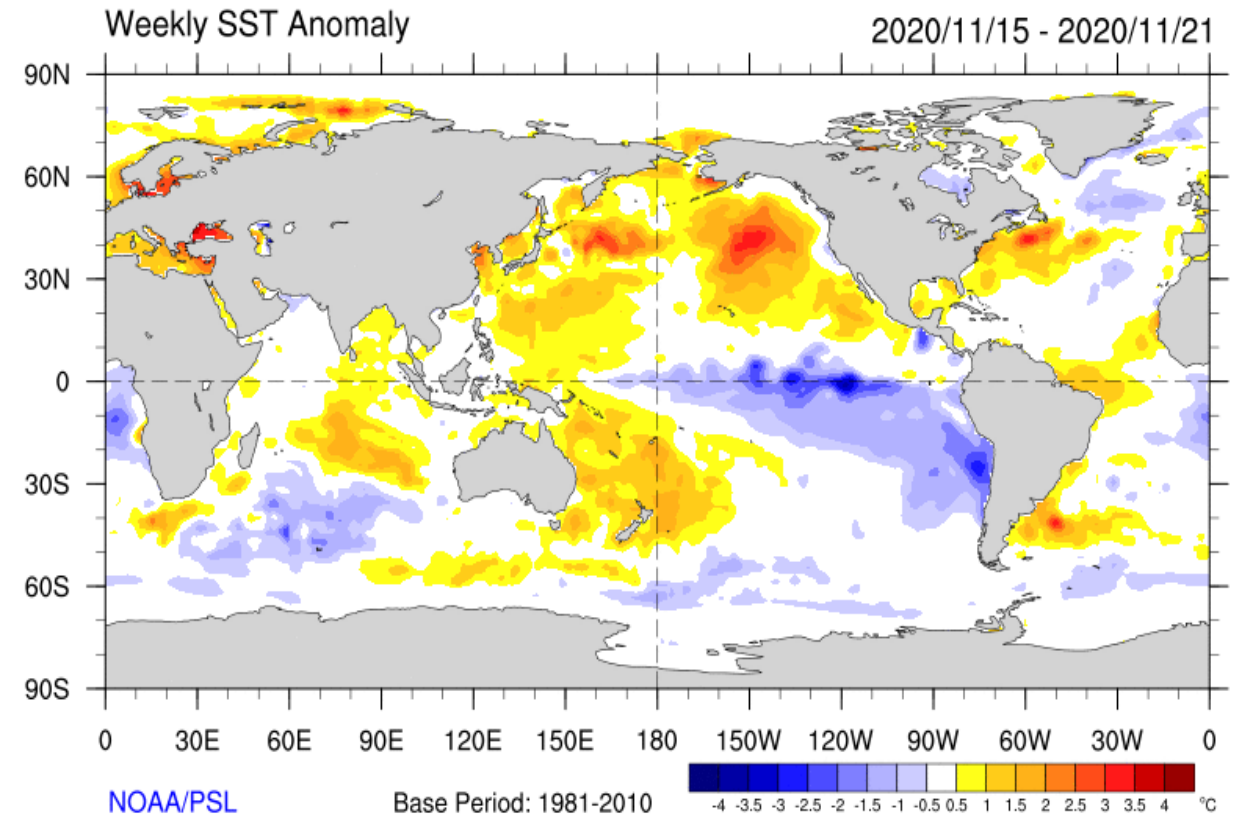
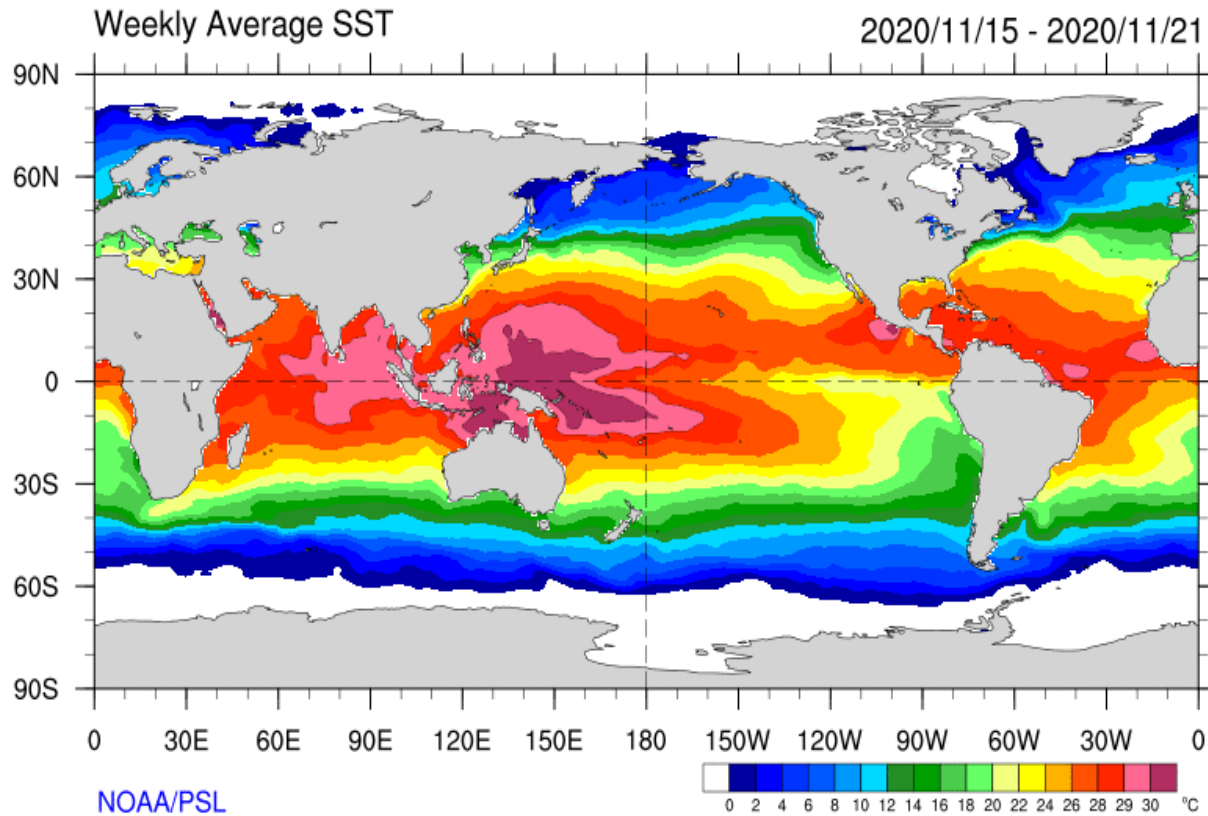


Monthly Regional Focus Group Session

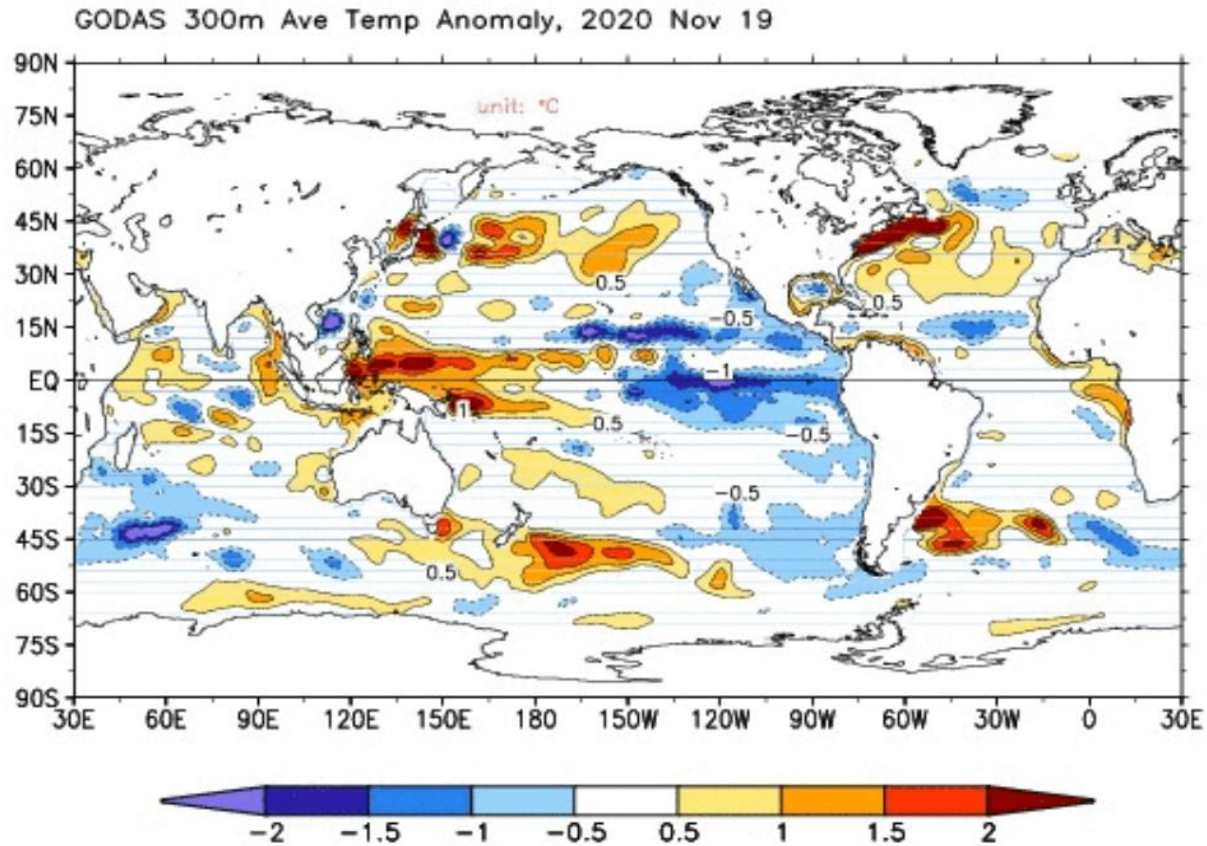
Wednesday 25 November 2020

Sea Surface Temperatures (Last Week)

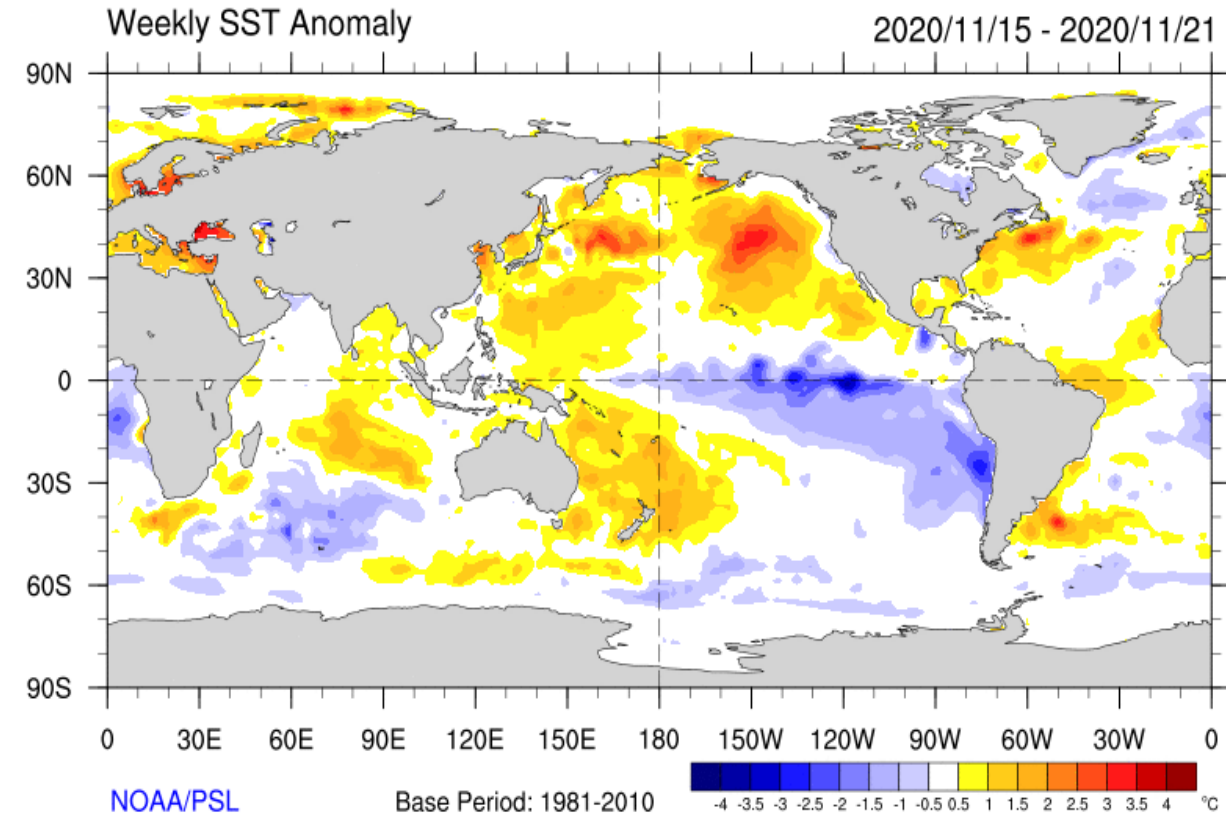


Deep Ocean Temperature Anomalies last longer:

Top 300-m Sea Temperature Anomaly



Sea Surface Temperature Anomaly



Source: GODAS, CPC

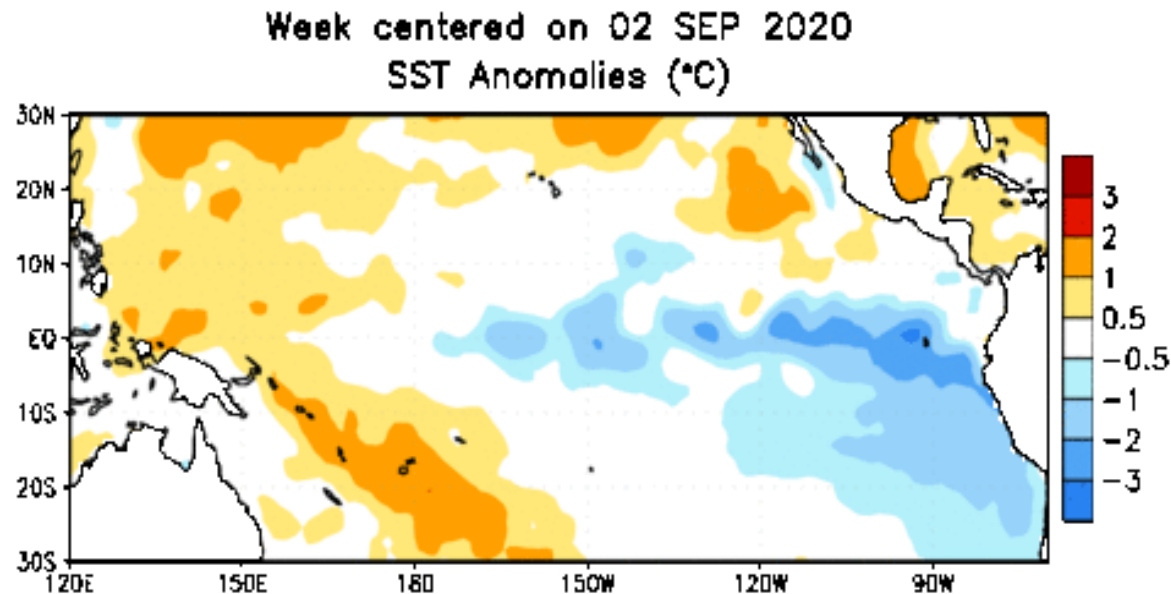
ENSO: La Niña

La Niña conditions are present.*

Equatorial sea surface temperatures (SSTs) are below average from the west-central to eastern Pacific Ocean.

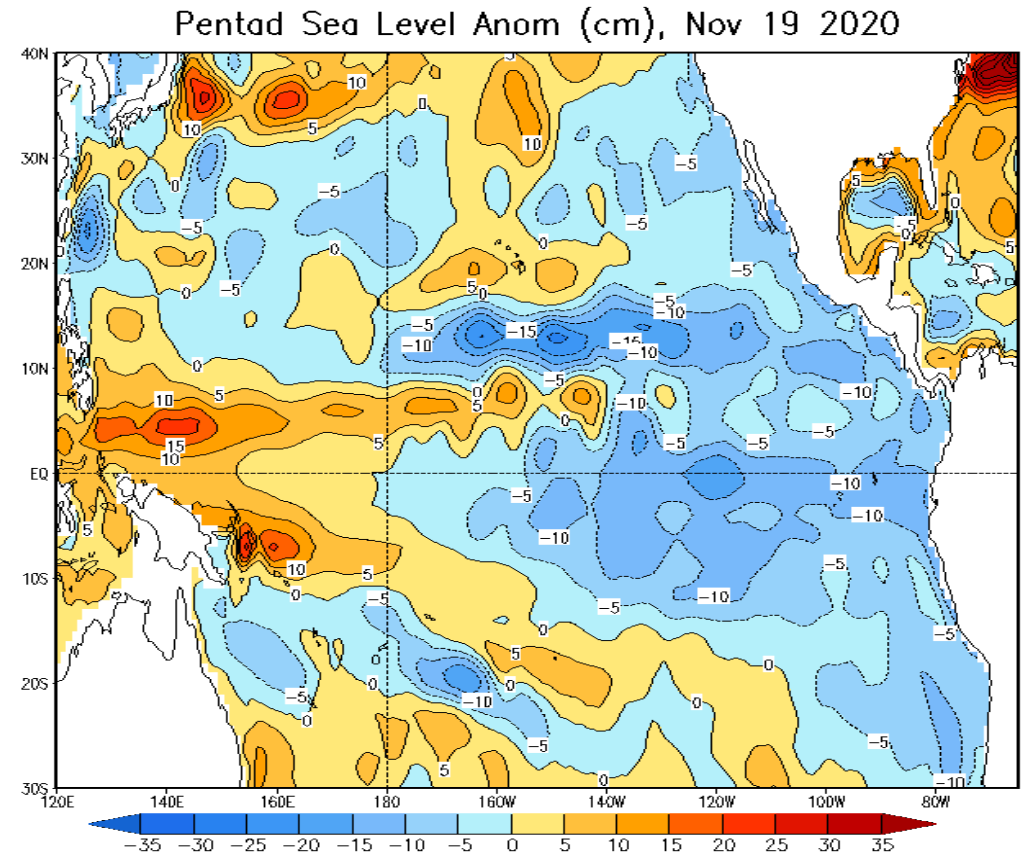
The tropical atmospheric circulation is consistent with La Niña.

Temperature Anomalies



Source: CPC

Sea Level Anomalies

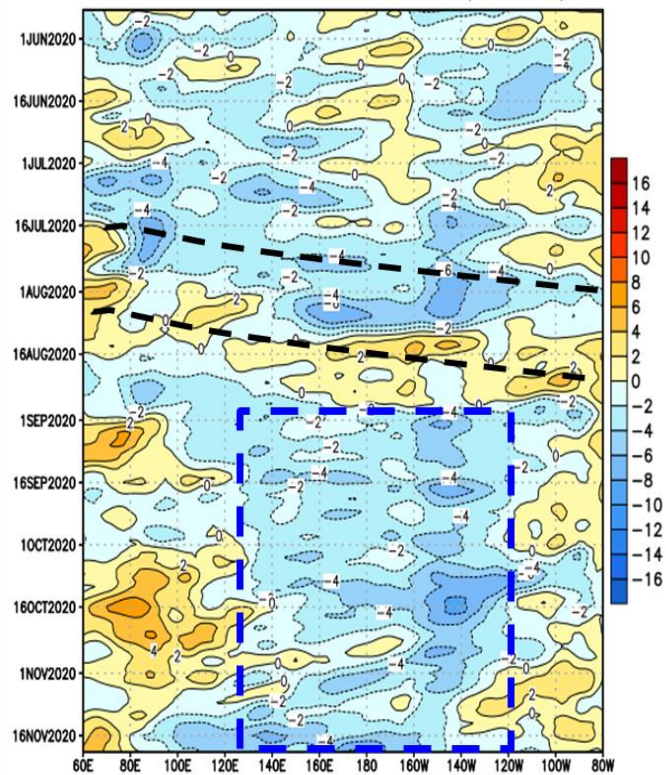


ENSO

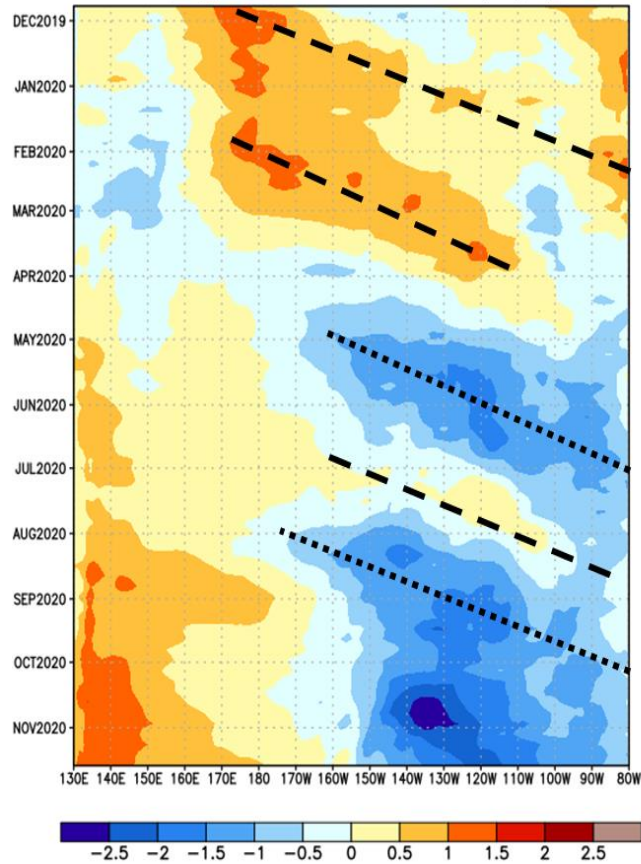
Hovmöllers: 850 hPa Winds, Heat Content

Animation: Pacific Temp. Anomaly

CDAS 850-hPa U Anoms. (5N-5S)

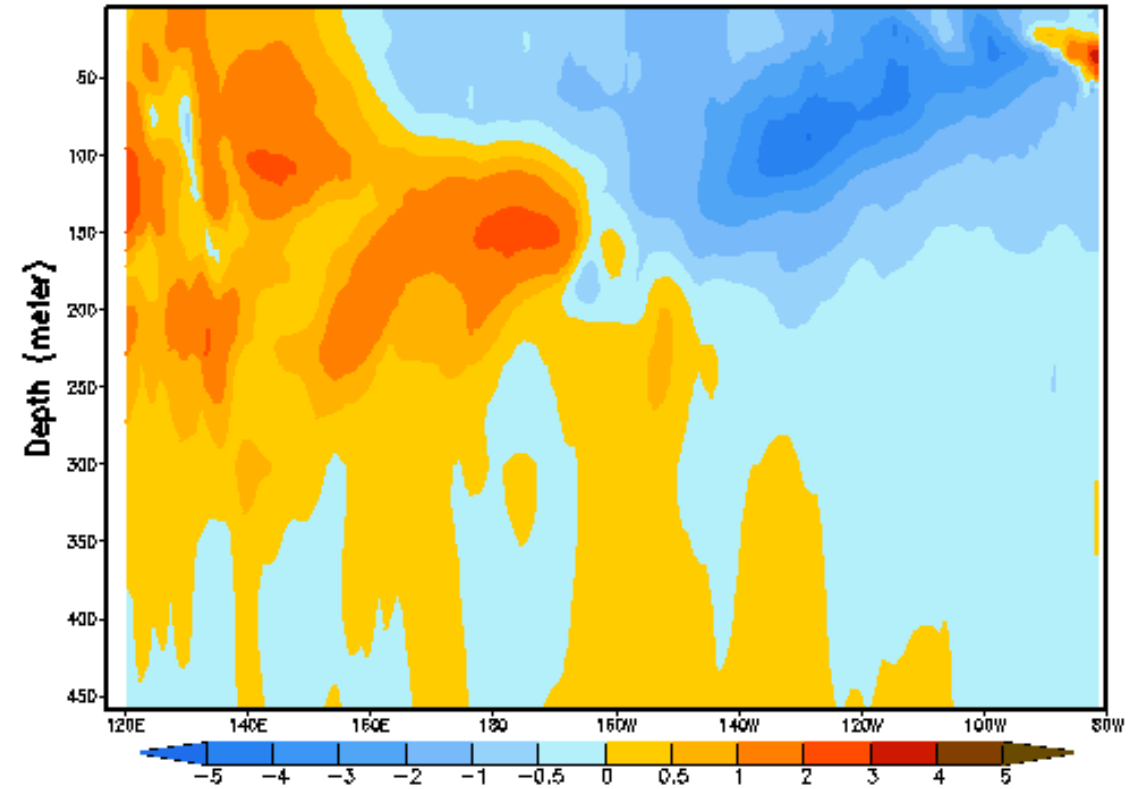


EQ. Upper-Ocean Heat Anoms. (deg C)



Equatorial Temperature Anomaly (°C)

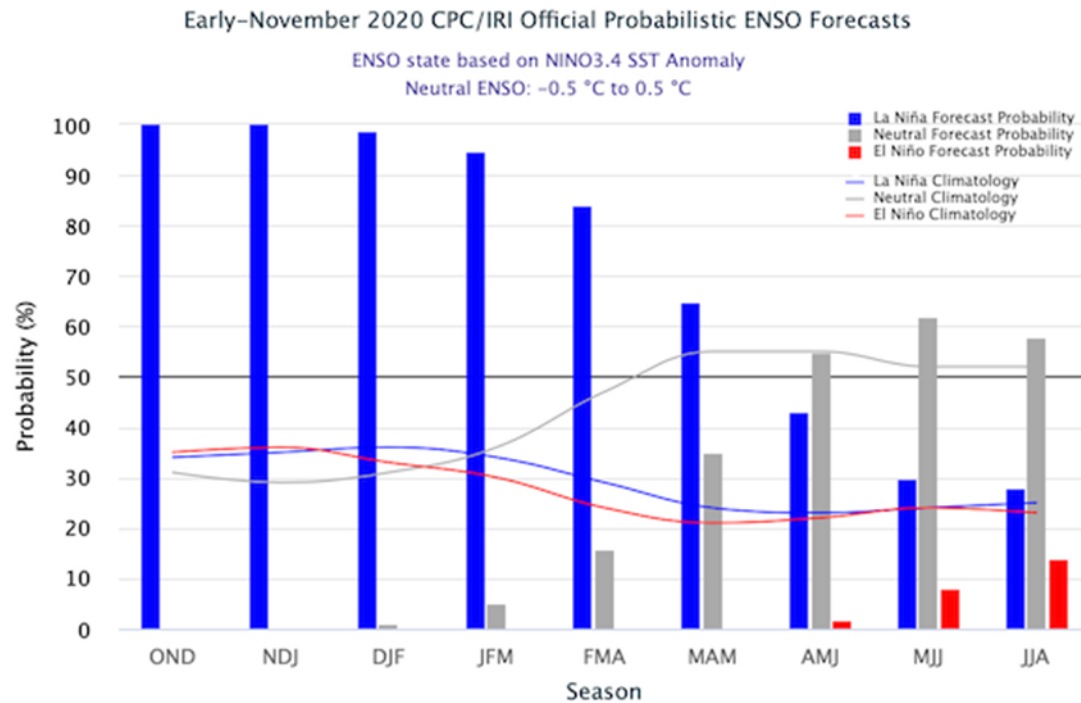
Pentad centered on 20 SEP 2020



ENSO Outlook

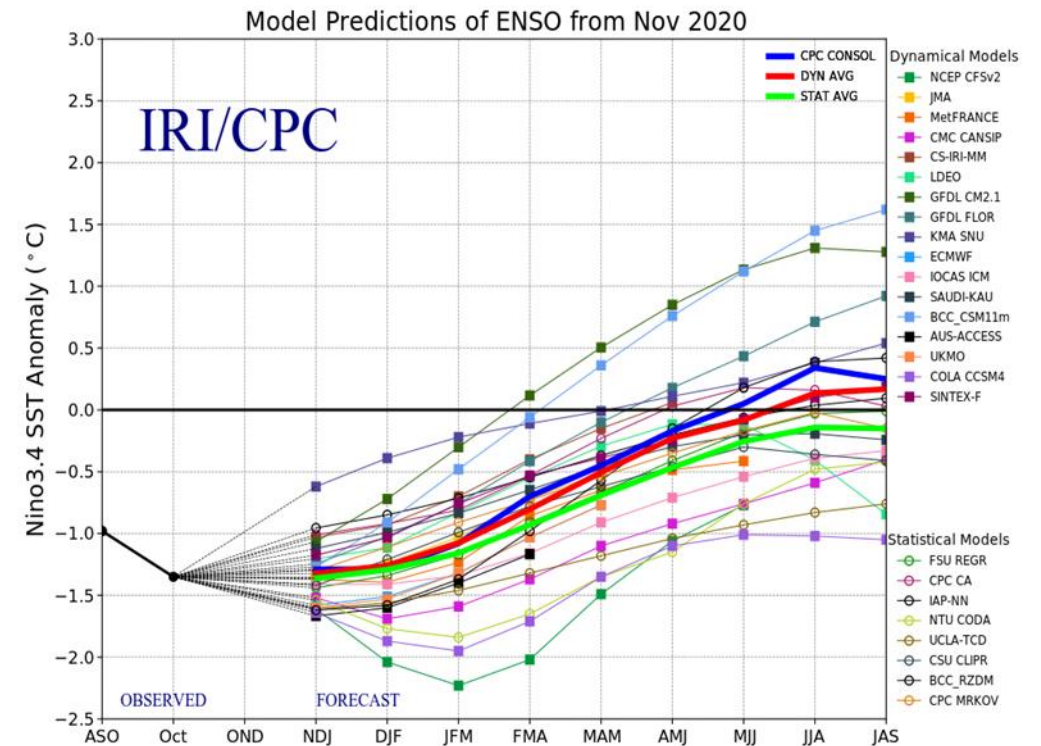
La Niña is likely to continue through the Northern Hemisphere winter 2020-21 (~95% chance during January-March) and into spring 2021 (~65% chance during March-May).*

CPC/IRI Probabilistic Forecast



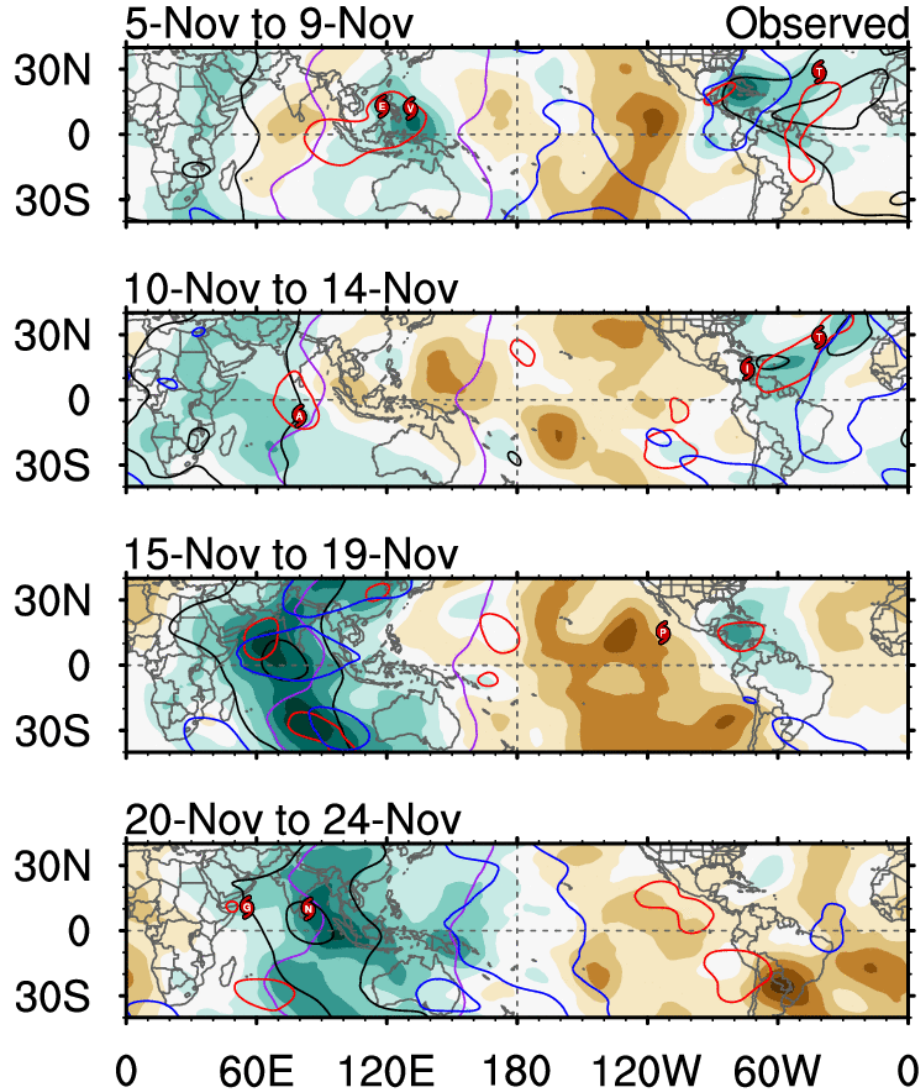
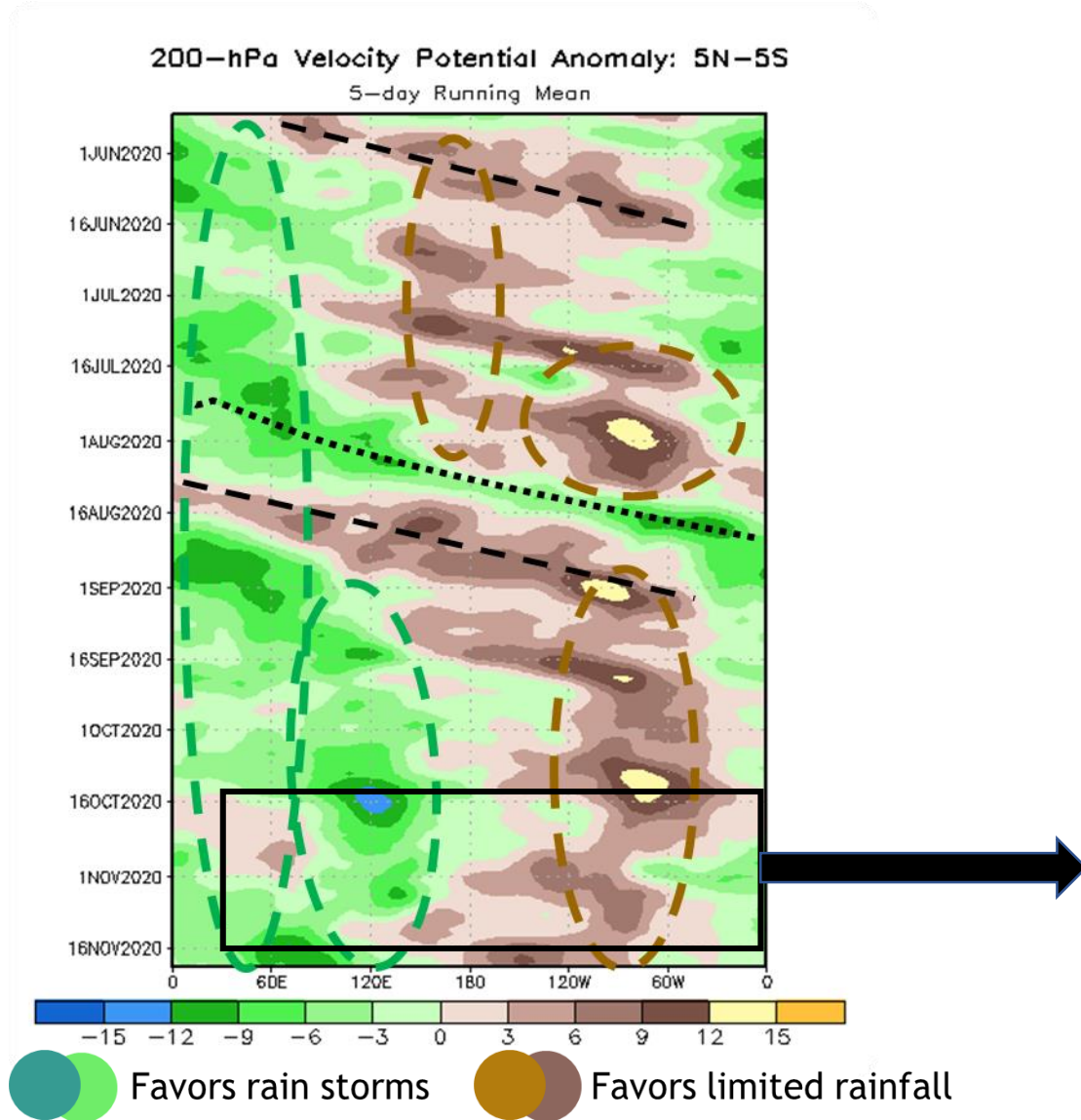
Source: CPC

IRI/CPC Dynamic Models



Source: IRI/CPC, 19 October

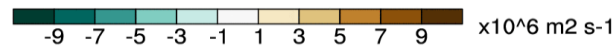
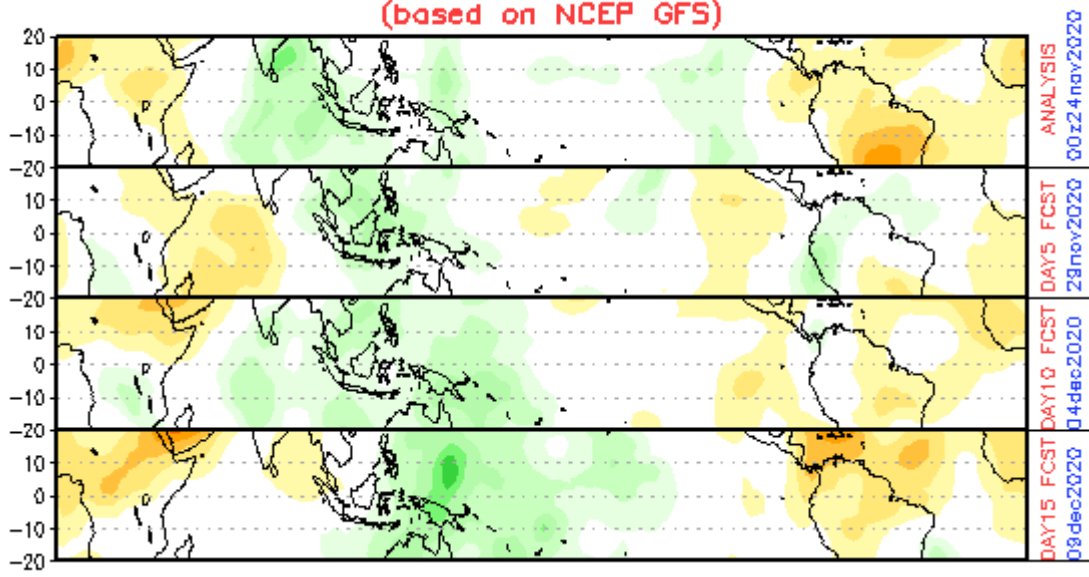
Madden-Julian Oscillation (MJO)



MJO Forecasts

GFS

CHI 200 hPa 15-DAY forecast (00z24nov2020–09dec2020)
(based on NCEP GFS)



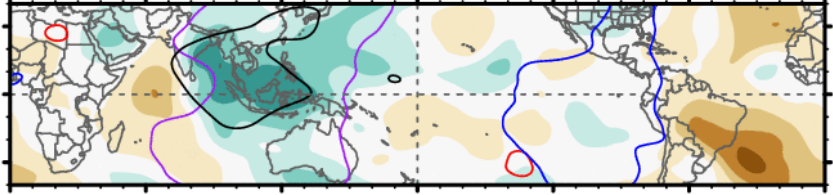
7-day CHI200 with CFS forecasts

Wed 2020-09-16 1018 UTC

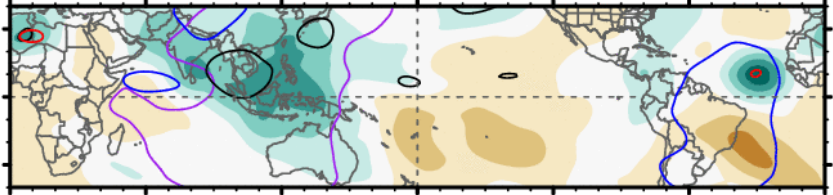
— MJO — Kelvin x2
— Low — ER
Contours at -2, -6 x10^6 m^2 s^-1
Carl Schreck
carl_schreck@ncsu.edu

CFS

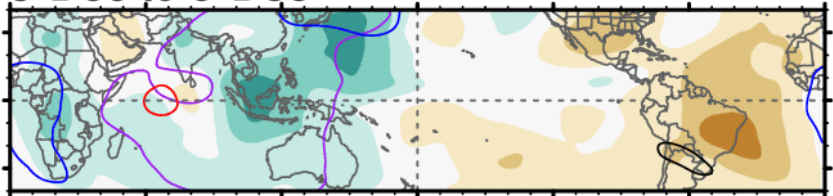
25-Nov to 29-Nov CFS Forecast



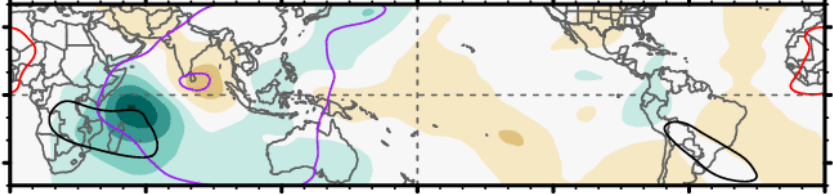
30-Nov to 4-Dec



5-Dec to 9-Dec



10-Dec to 14-Dec

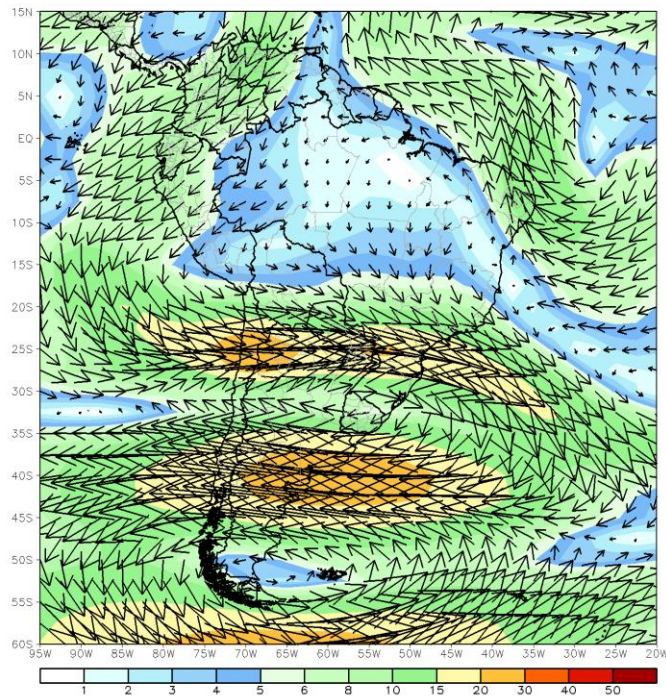


0 60E 120E 180 120W 60W 0

Last week's anomalies for South America

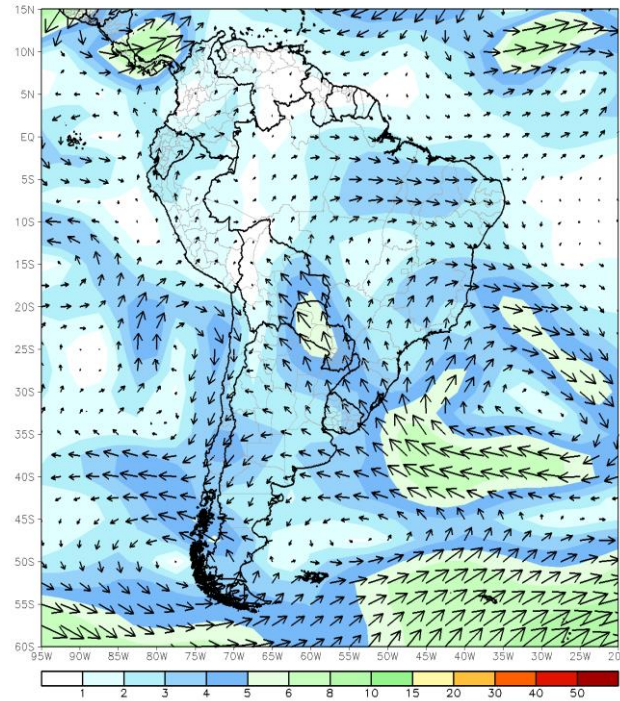
200 hPa Flow

CDAS 200mb 7-Day Mean Vector Wind Anomaly (m/s)
Period: 16Nov2020 - 22Nov2020



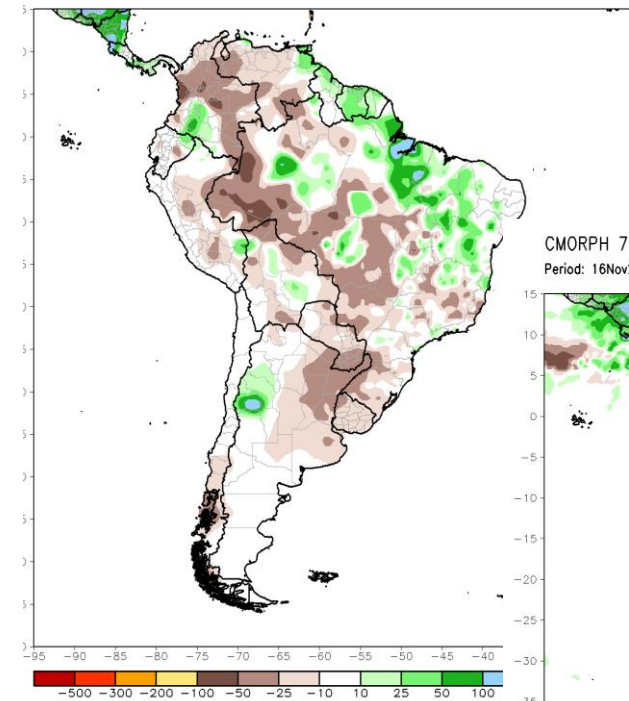
850 hPa Flow

CDAS 850mb 7-Day Mean Vector Wind Anomaly (m/s)
Period: 16Nov2020 - 22Nov2020

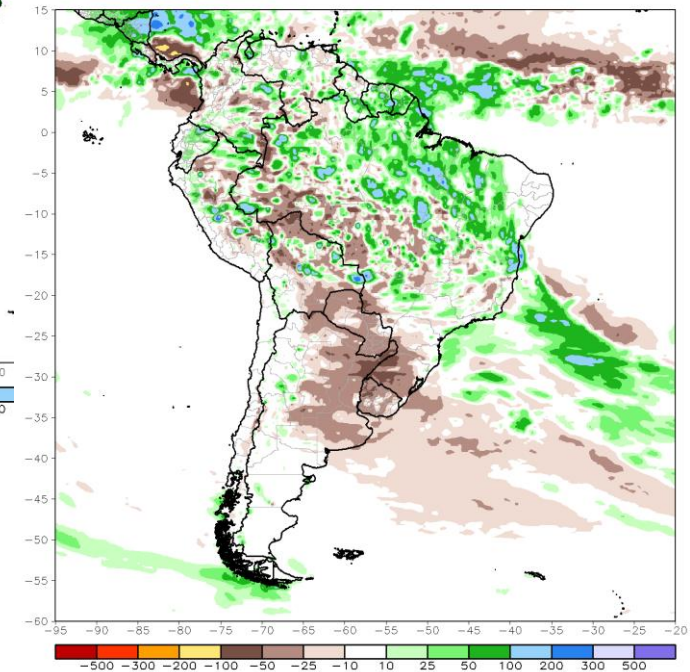


Rainfall

CPC Unified Gauge 7-Day Total Rainfall Anomaly (mm)
Period: 17Nov2020 - 23Nov2020



CMORPH 7-Day Total Rainfall Anomaly (mm)
Period: 16Nov2020 - 22Nov2020

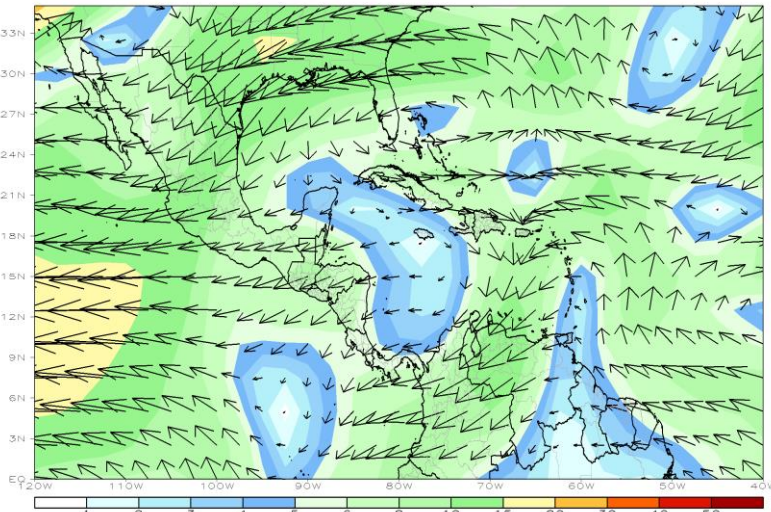


CMORPH: CPC Morphing Technique
https://www.cpc.ncep.noaa.gov/products/janowiak/cmorph_description.html

Last Week's anomalies for the Tropical Americas

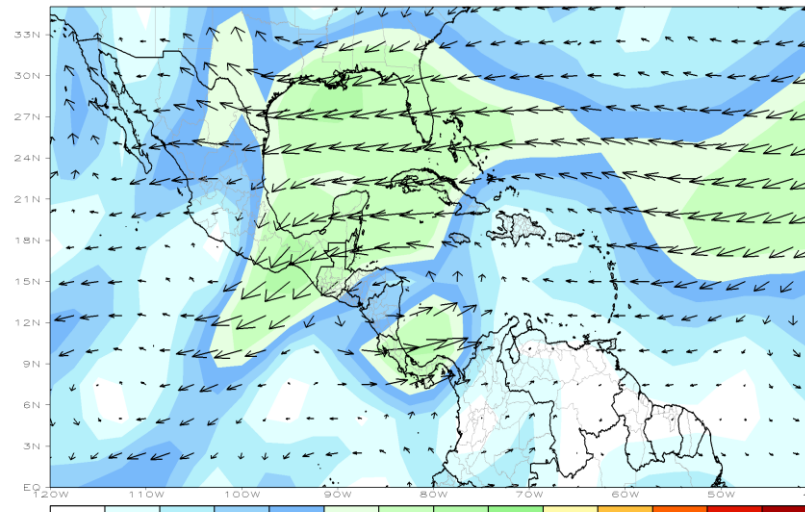
200 hPa Flow

CDAS 200mb 7-Day Mean Vector Wind Anomaly (m/s)
Period: 16Nov2020 - 22Nov2020



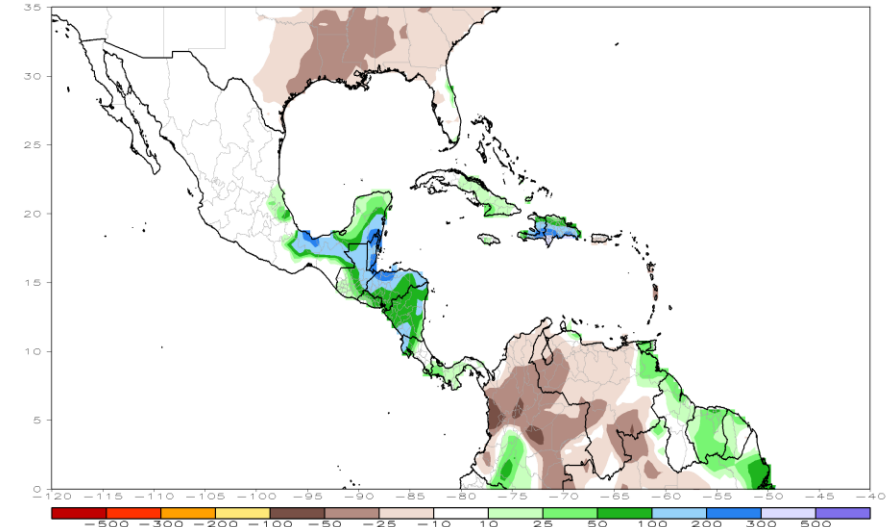
850 hPa Flow

CDAS 850mb 7-Day Mean Vector Wind Anomaly (m/s)
Period: 16Nov2020 - 22Nov2020

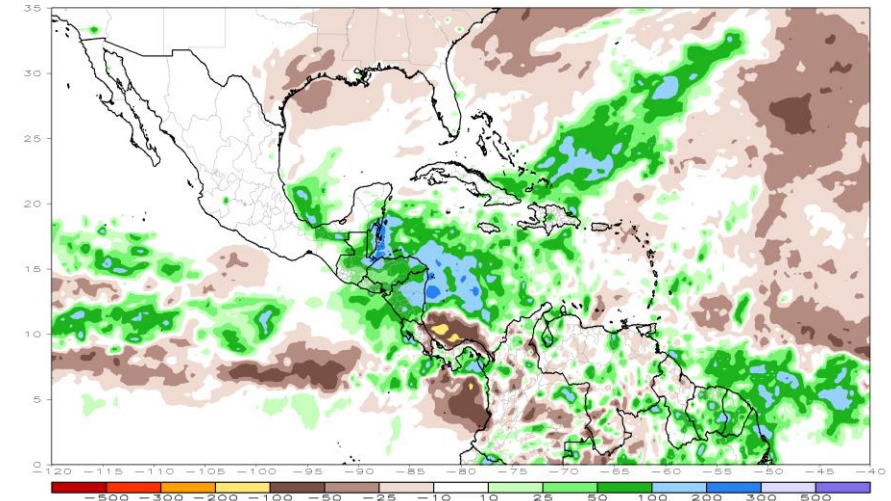


Rainfall

CPC Unified Gauge 7-Day Total Rainfall Anomaly (mm)
Period: 17Nov2020 - 23Nov2020



CMORPH 7-Day Total Rainfall Anomaly (mm)
Period: 16Nov2020 - 22Nov2020



CMORPH: CPC Morphing Technique
https://www.cpc.ncep.noaa.gov/products/janowiak/cmorph_description.html

¡Gracias!

Thank you!