

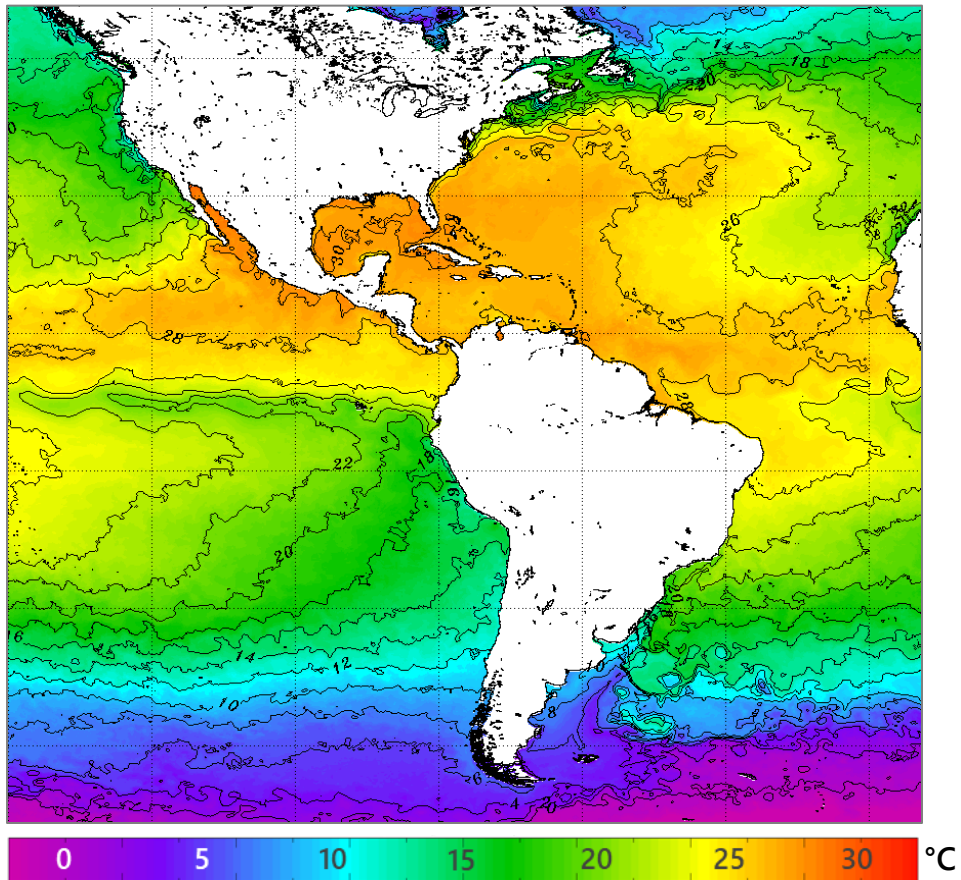
Monthly Regional Focus Group Session

Wednesday 17 August 2022 at 15 UTC

<https://rammb2.cira.colostate.edu/training/rmtc/focusgroup/>

Sea Surface Temperatures (SST)

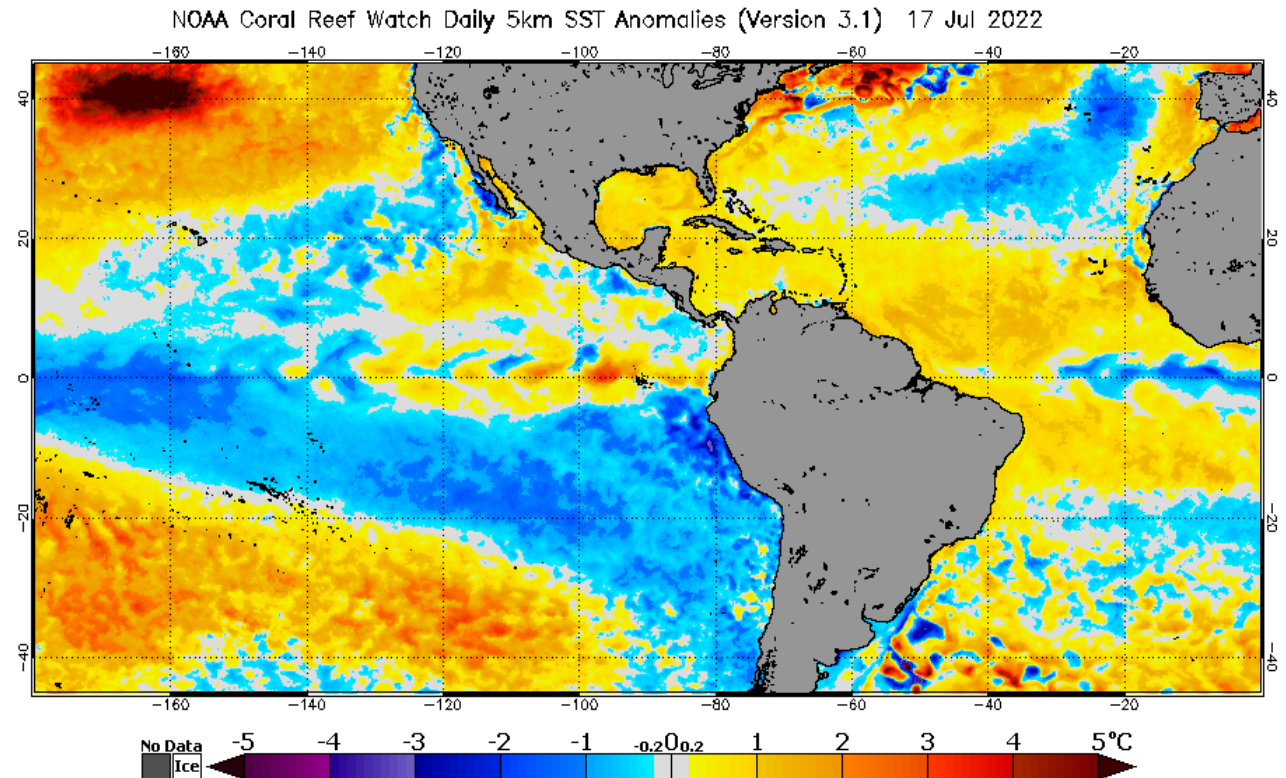
Daily SST August 15



NOAA OSPO

https://www.ospo.noaa.gov/data/sst/contour/global_small.c.gif

Anomaly Evolution



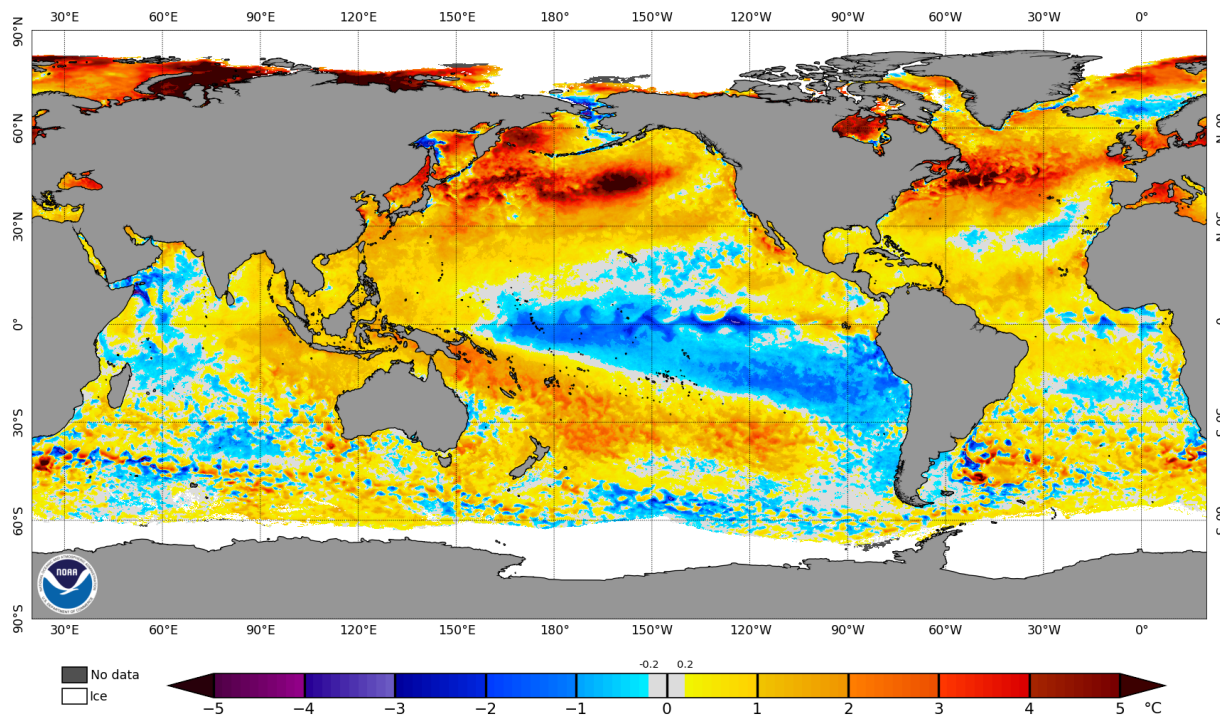
NOAA Coral Reef Watch

<https://coralreefwatch.noaa.gov/>

Are sea temperature anomalies deep?

Deep anomalies last longer, becoming useful for subseasonal forecasting.

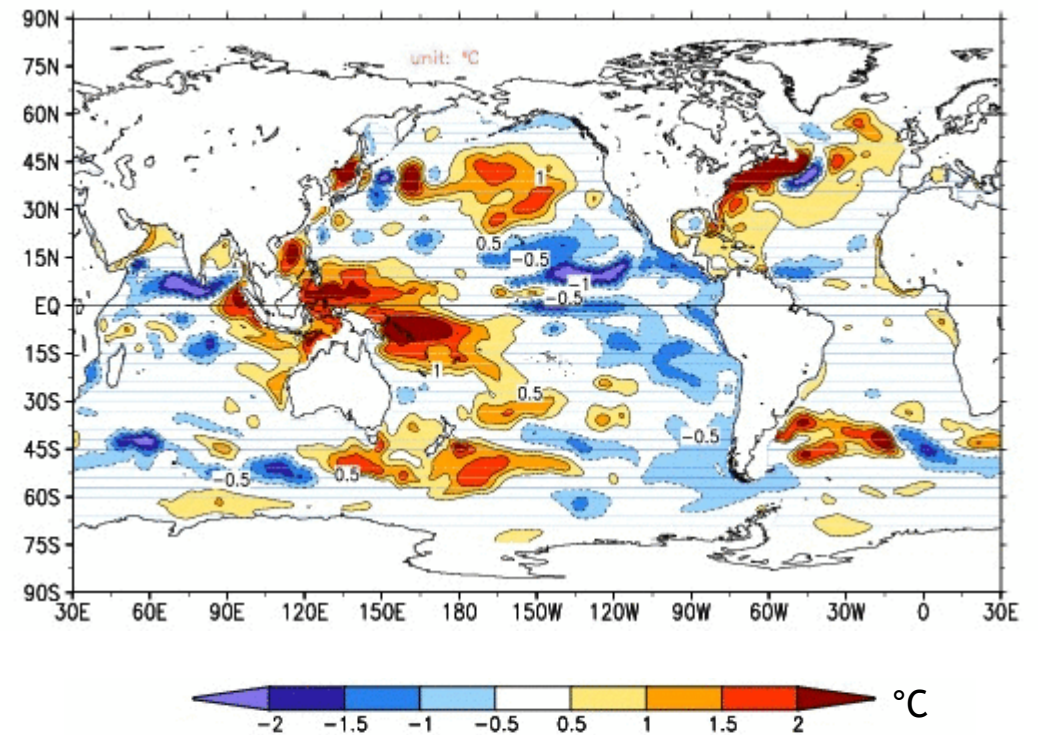
SST Anomaly – 15 August



NOAA Coral Reef Watch

Source: https://coralreefwatch.noaa.gov/product/5km/index_5km_ssta.php

GODAS Top 300m-Layer Anomaly – 11 August



NOAA CPC

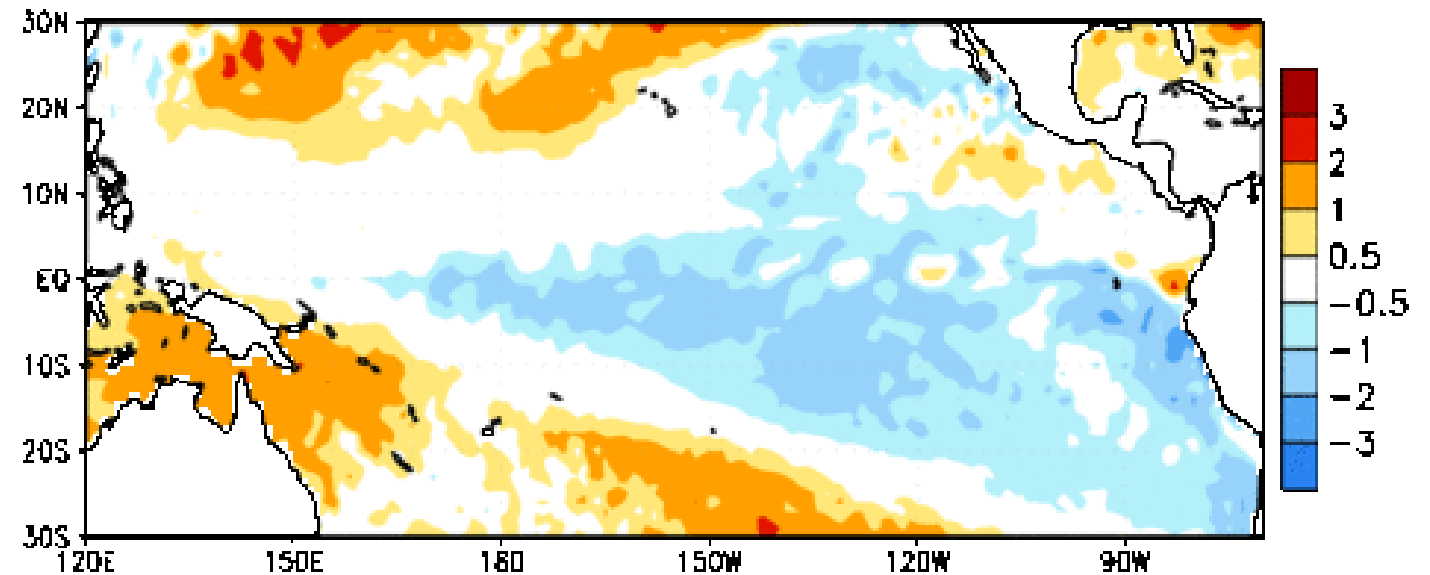
Source: CPC GODAS, <https://www.cpc.ncep.noaa.gov/products/GODAS/>

ENSO: La Niña

(no changes since April)

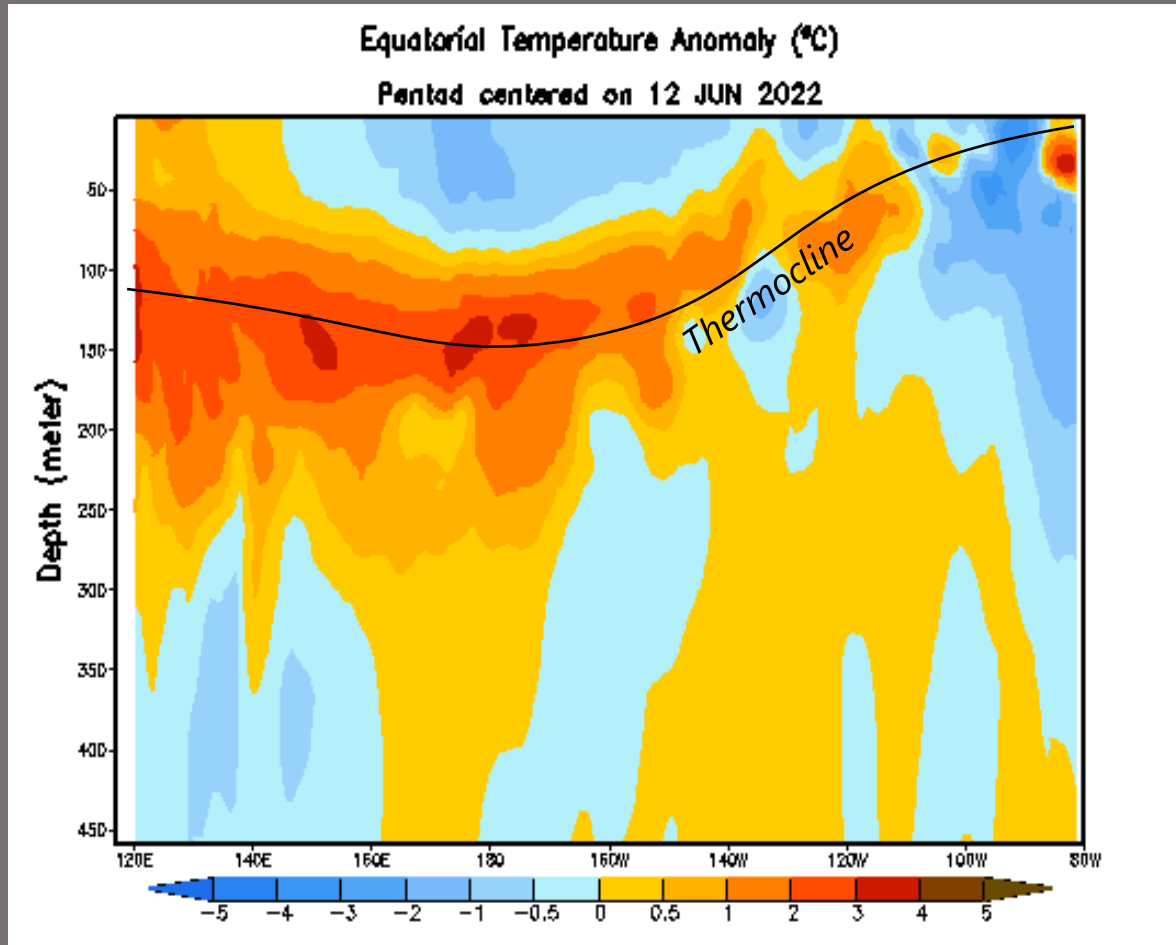
- ☯ La Niña is present.*
- ☯ Equatorial SSTs are below average across most of the Pacific Ocean.
- ☯ The tropical Pacific atmosphere is consistent with La Niña.

Week centered on 25 MAY 2022
SST Anomalies (°C)



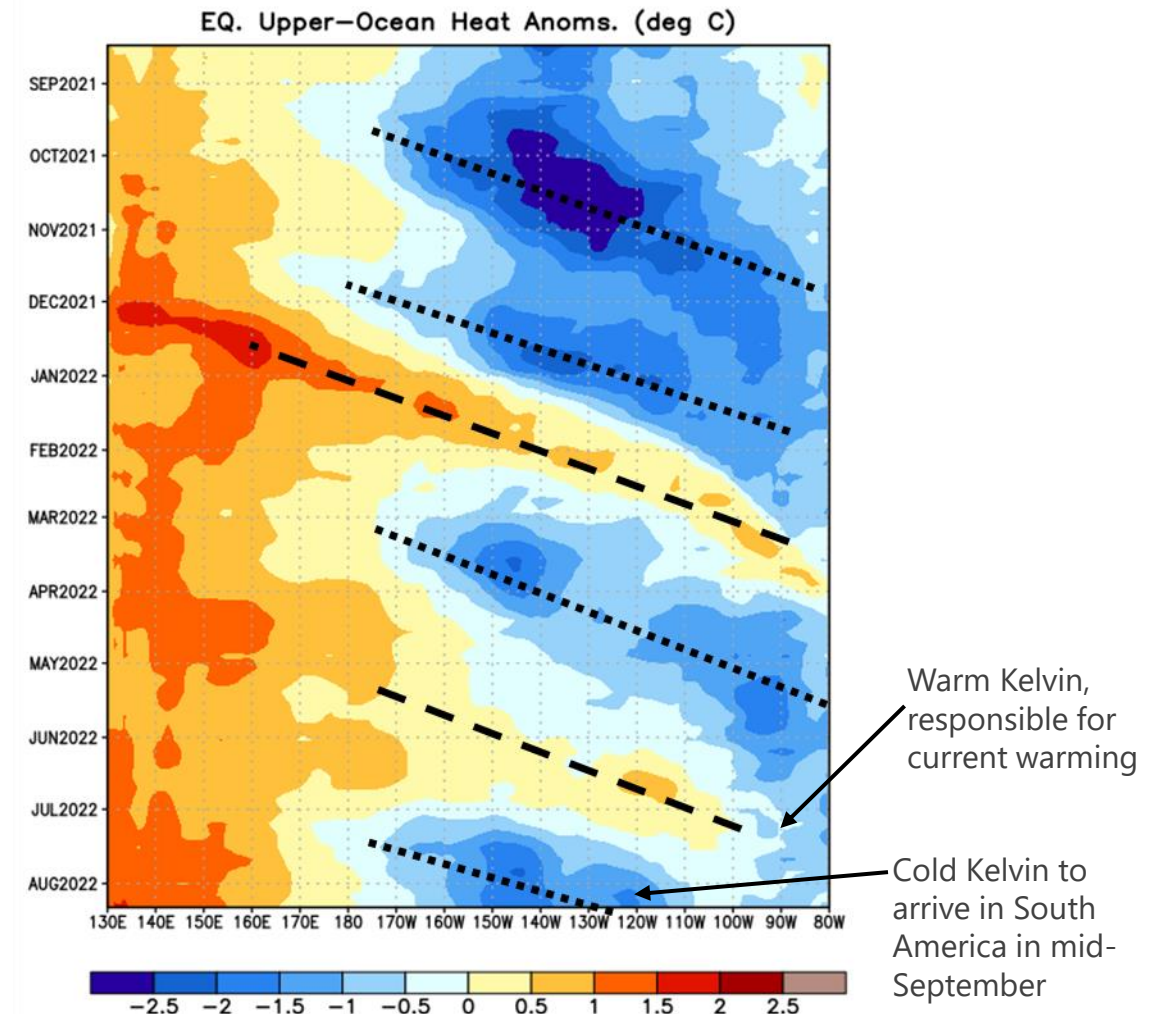
ENSO: Oceanic Kelvin Waves

Equatorial Pacific Temperature Anomaly Cross Section



Source: CPC

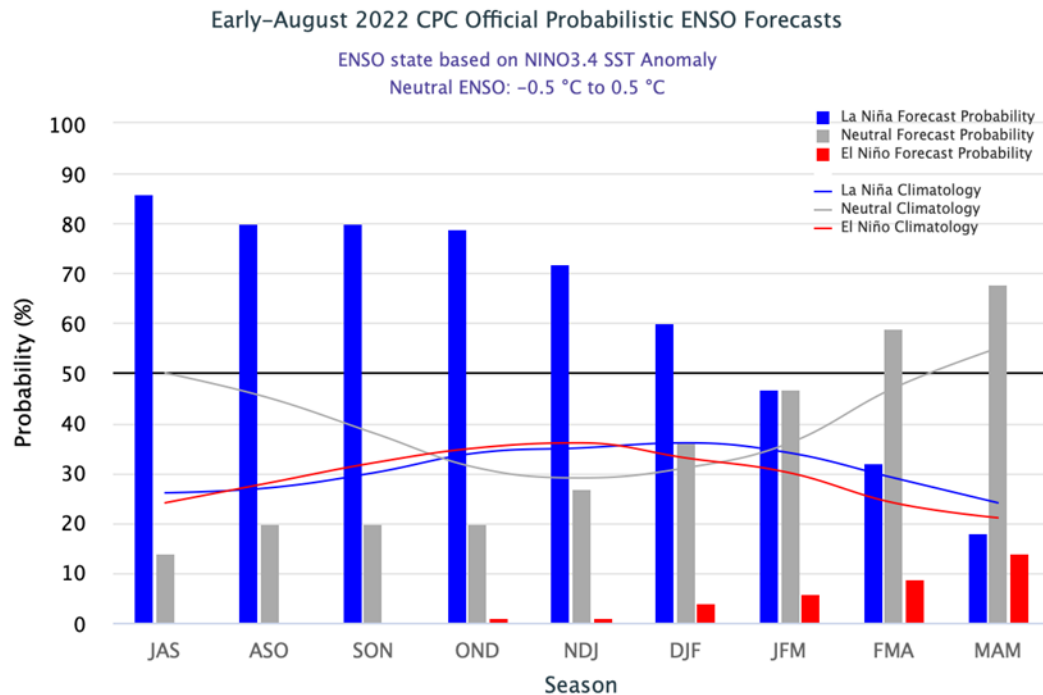
Heat Content Hovmöller



ENSO Outlook

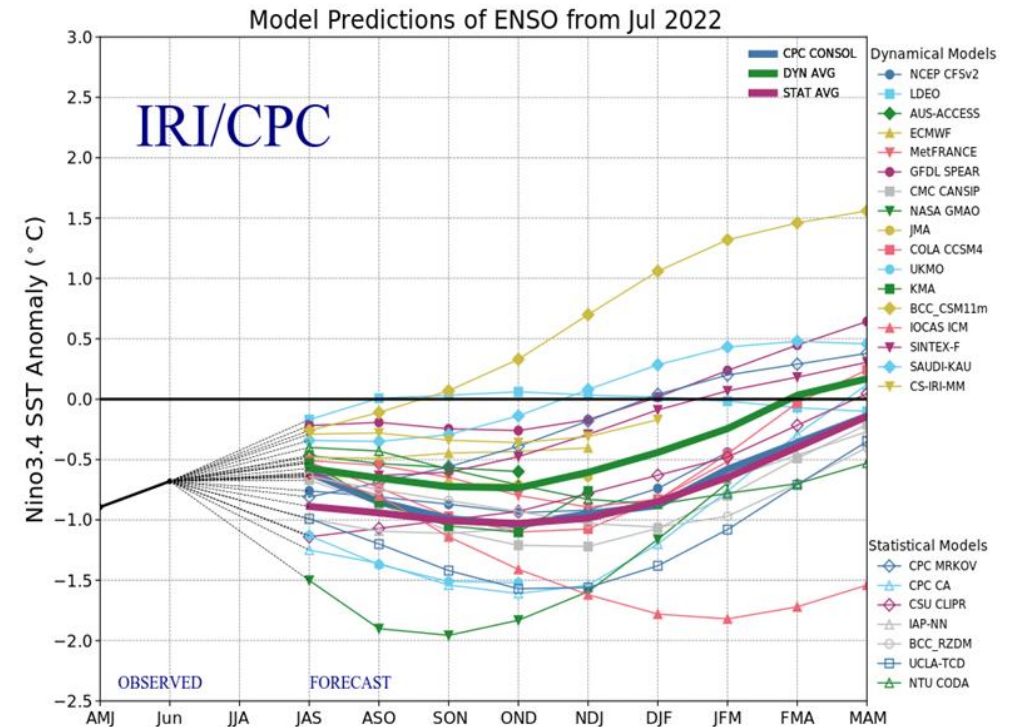
La Niña is expected to continue, with chances for La Niña gradually decreasing from 86% in the coming season to 60% during December-February 2022-23.*

CPC/IRI Probabilistic Forecast



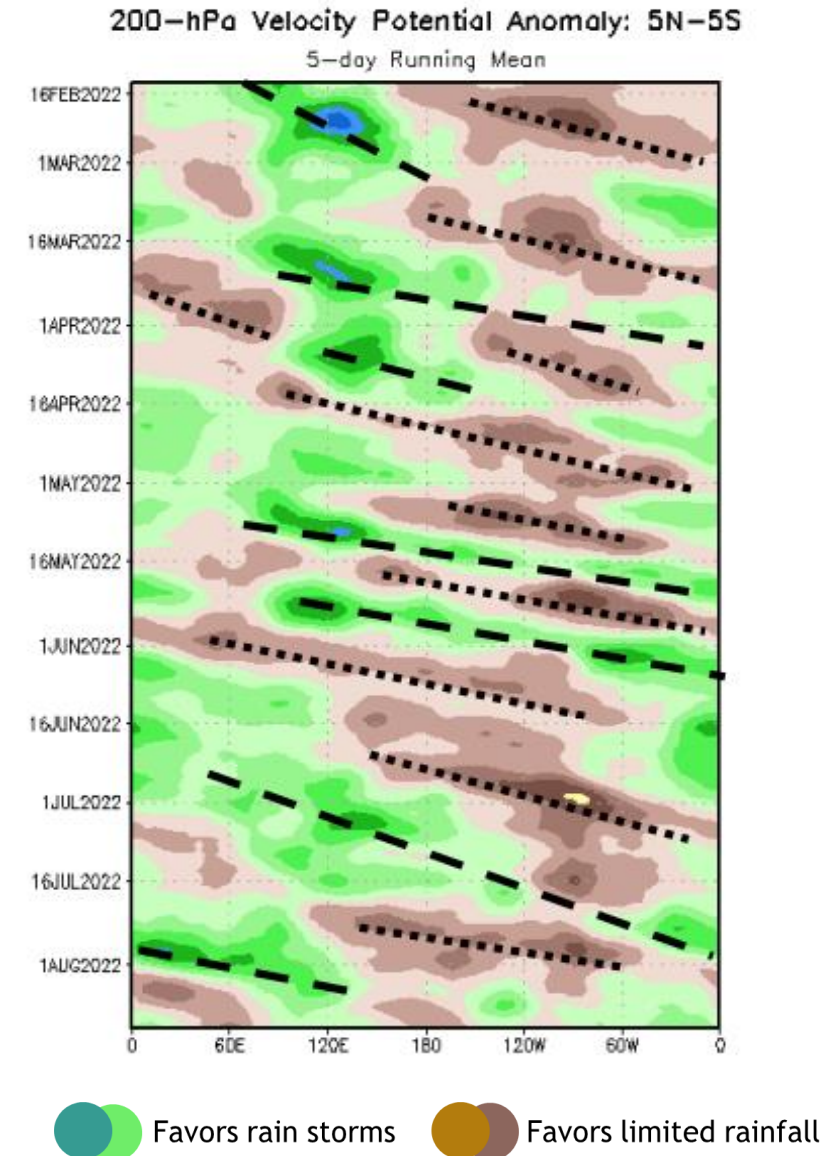
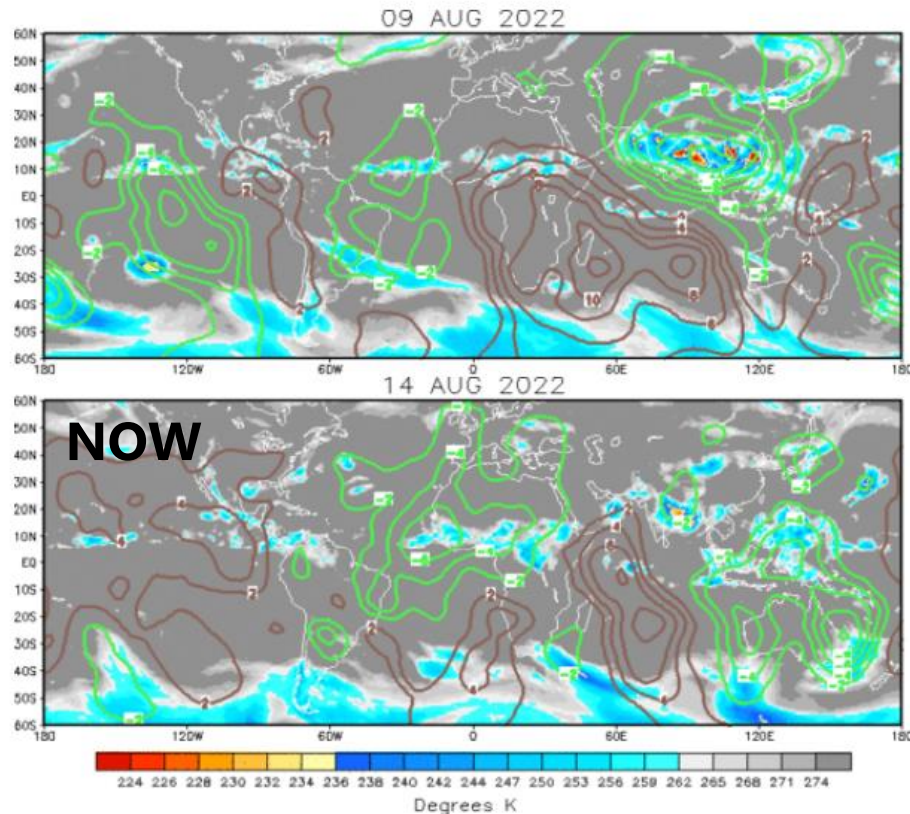
Source: CPC

IRI/CPC Dynamic Models



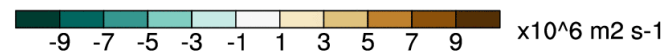
Madden-Julian Oscillation (MJO)

- MJO-related Velocity Potential poorly defined in early August.
- Kelvin wave in Africa, another in the western Pacific (to monitor for late August).



Tropospheric Equatorial Waves

- August 25-31: Wet Kelvin embedded in weak MJO Pulse
- Neutral in early September?



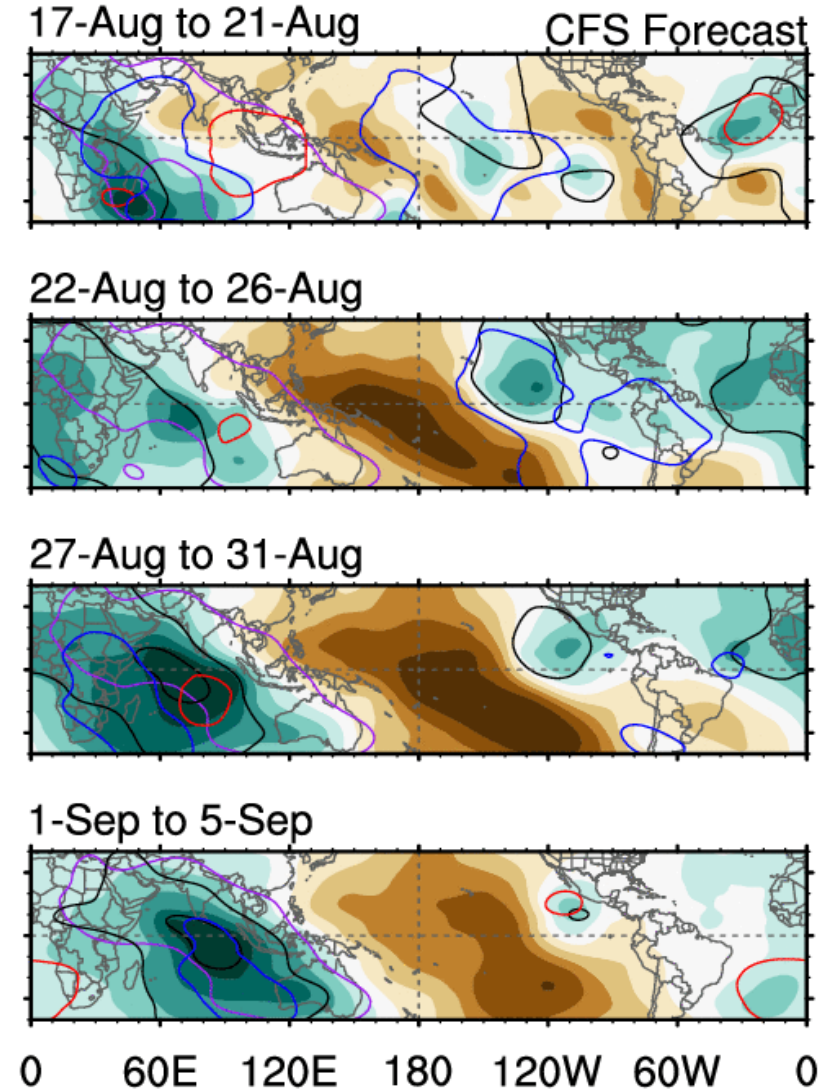
7-day CHI200 with CFS forecasts

Wed 2020-09-16 10:18 UTC

— MJO — Kelvin x2
— Low — ER

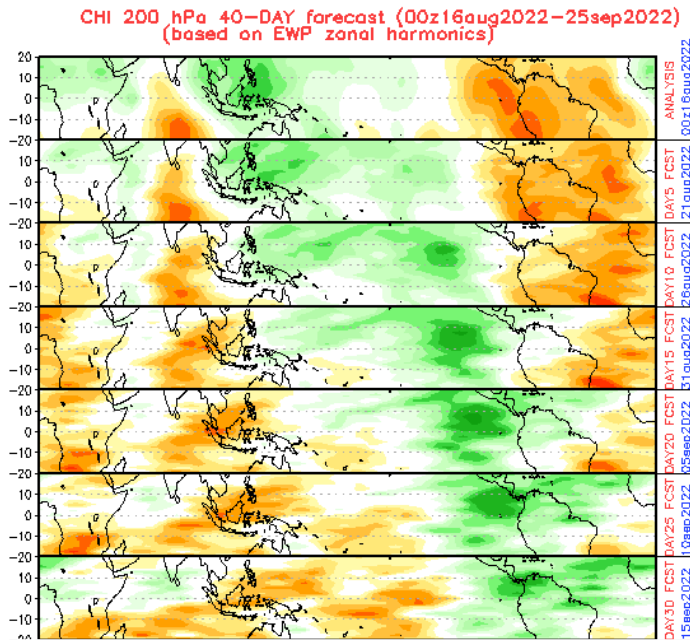
Contours at -2, -6 $\times 10^6 \text{ m}^2 \text{ s}^{-1}$

Carl Schreck
carl_schreck@ncsu.edu

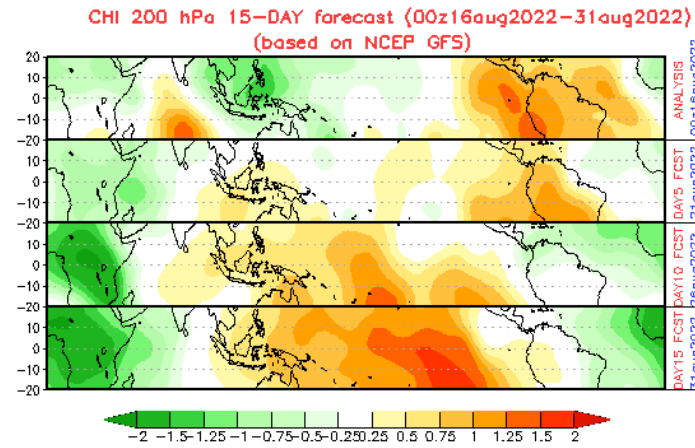


MJO Forecasts for the Americas

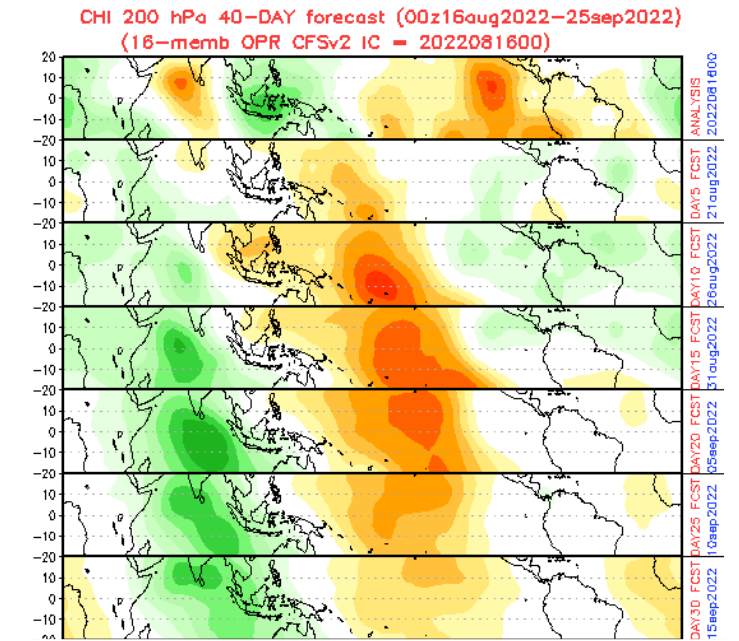
EWP



GFS



CFS

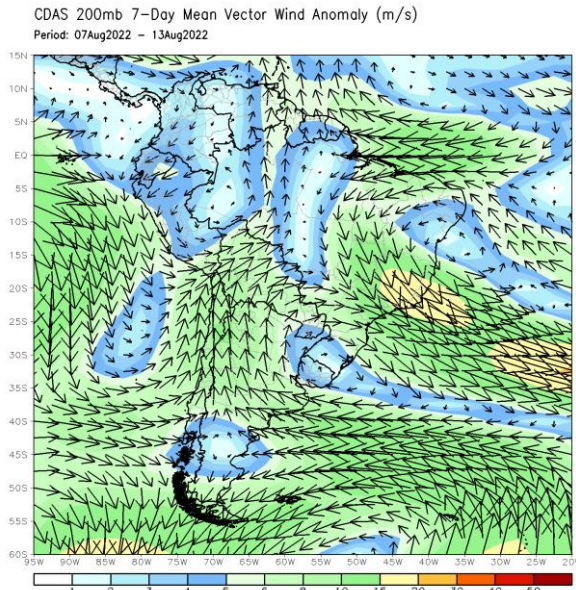


- Weak upper divergent: last week of August
- Neutral in September

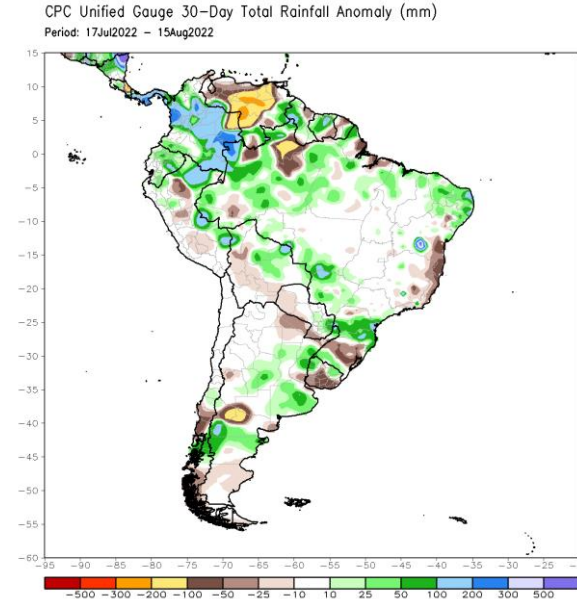
↖ Tropical Cyclogenesis in the Atlantic?

Flow and Rainfall Anomalies, Last 7 Days

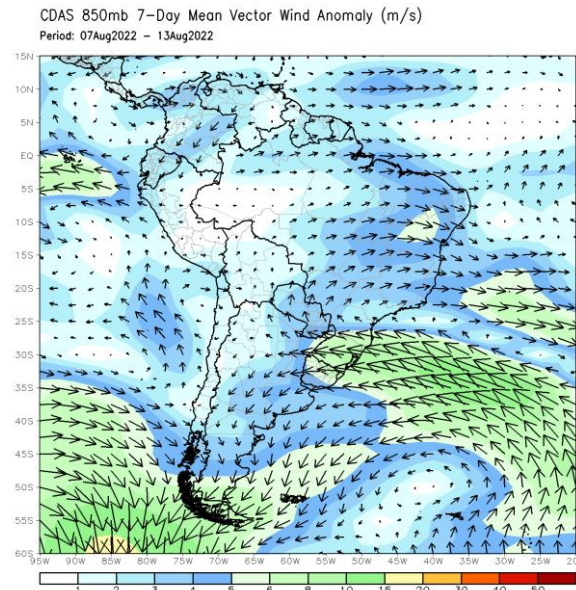
200 hPa Flow
Anomalies



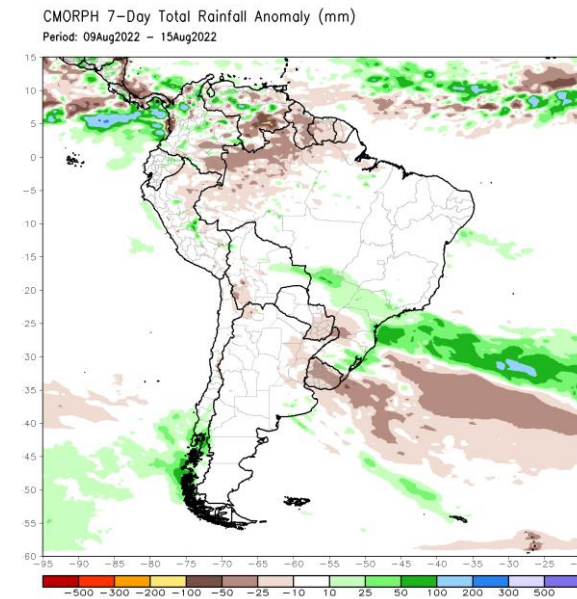
Gauges



850 hPa Flow
Anomalies

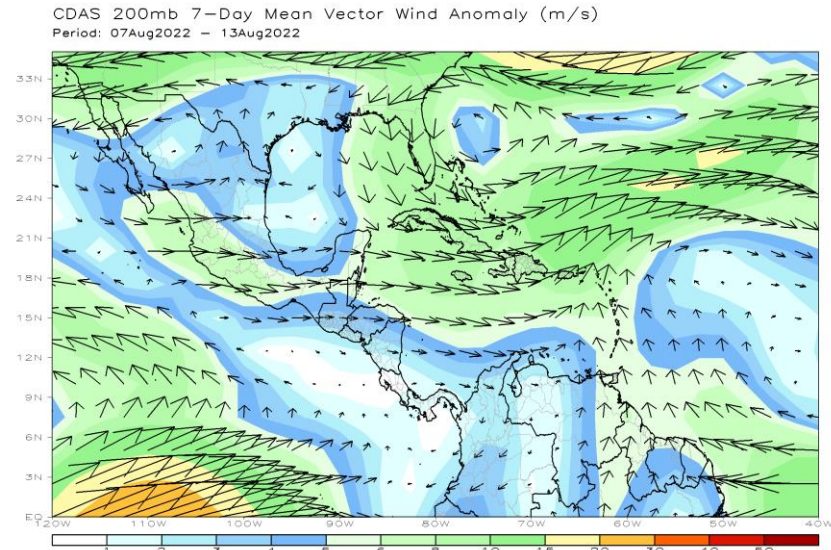


CMORPH

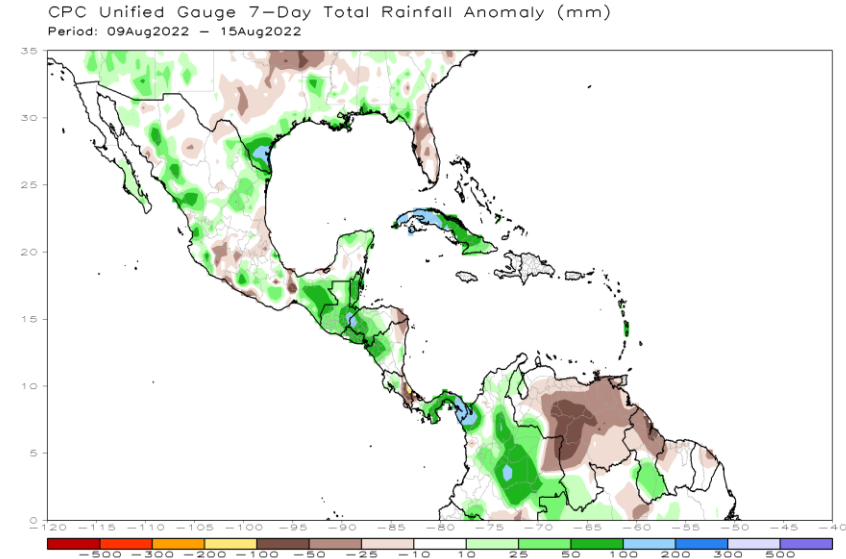


Flow and Rainfall Anomalies, Last 7 Days

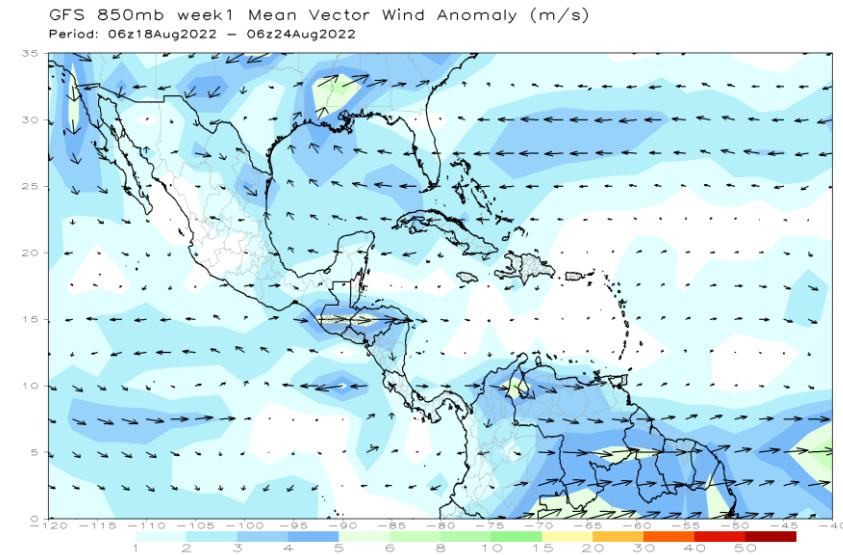
200 hPa Flow
Anomalies



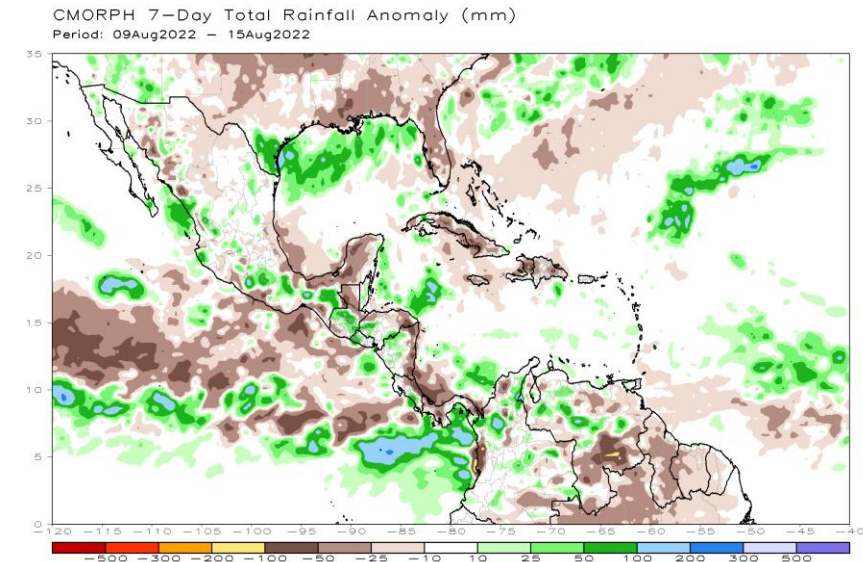
Gauges



850 hPa Flow
Anomalies



CMORPH



¡Gracias!
Thank you!
¡Obrigado!

Next session: Wed 14 September at 15 UTC

Recorded sessions and more information available at:
<https://rammb2.cira.colostate.edu/training/rmtc/focusgroup/>