

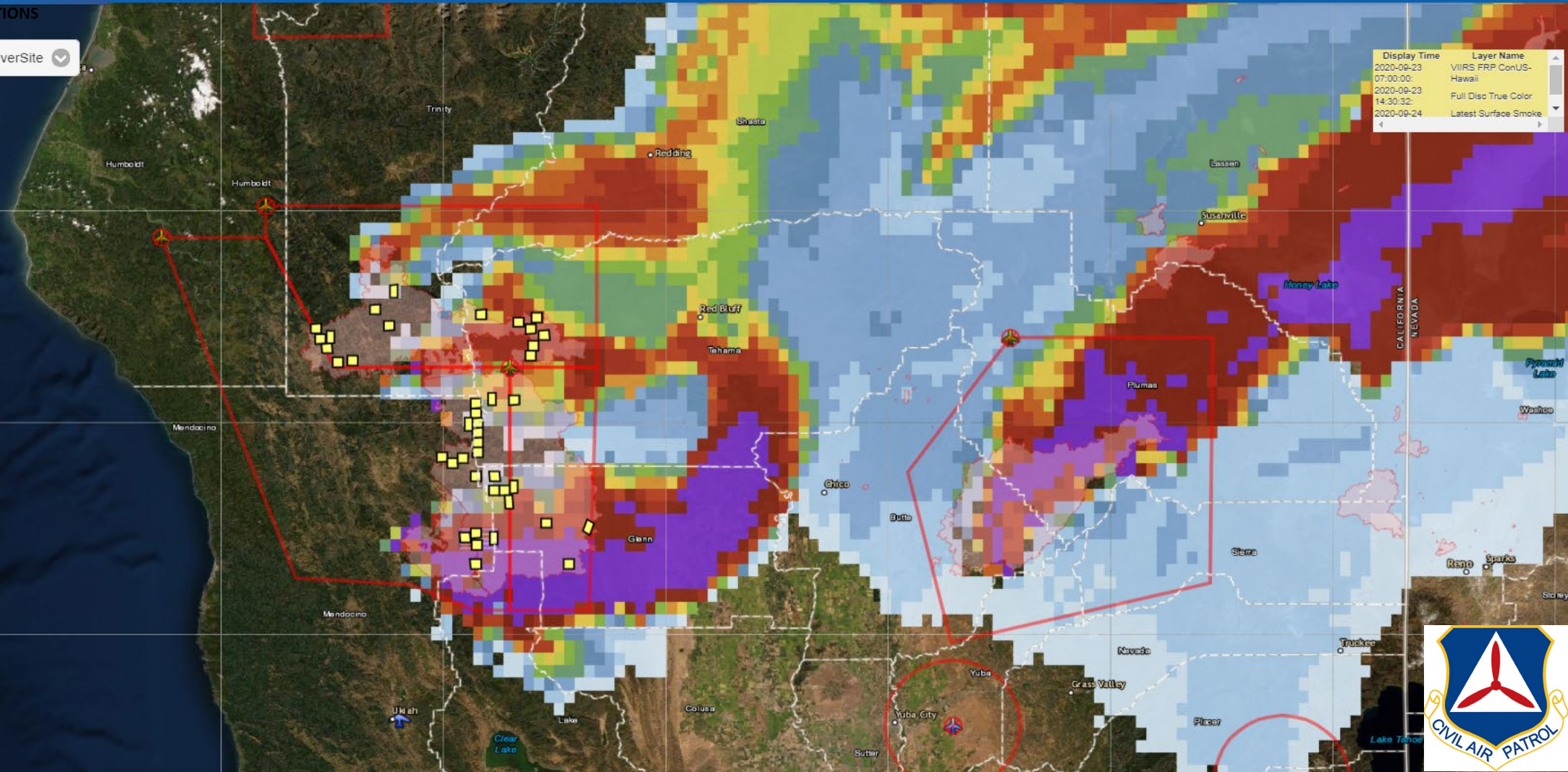


FIRE & SMOKE INITIATIVE

STORMCENTER COMMUNICATIONS

On ☐ GeoCollaborate® Select SeverSite

Search bar with X and Q icons



Display Time	Layer Name
2020-09-23 07:00:00	VIIRS FRP ConUS-Hawaii
2020-09-23 14:30:32	Full Disc True Color
2020-09-24	Latest Surface Smoke



March 18, 2021 AMS GOES-R | JPSS Hands-on Training | Short Course
Sharing NOAA Data across platforms to Support CA Civil Air Patrol | CA National Guard via GeoCollaborate

Dave Jones, StormCenter Communications | GeoCollaborate

dave@stormcenter.com

Co-chair ESIP Disaster Lifecycle Cluster



Sharing Trusted Data to Drive Decision Making

- StormCenter focuses on disparate data integration into decision making environments (Emergency Ops Centers, Utility Industry, Food, Fuel, Transportation, Medical Supply sectors and more)
- We have seen many presentations where datasets are being processed and placed into GIS formats & services – Excellent!!

Sharing Trusted Data to Drive Decision Making

- I am going to talk about: How data can be SHARED across a group of collaborators/decision makers/scientists
- Placing everyone on the same map at the same time
Looking at the SAME data

Sharing Trusted Data to Drive Decision Making

- There is no 'One Stop Shop' for geospatial data. There will always be new valuable datasets produced by known trusted partners and new trusted partners
- Geospatial efforts and initiatives within agencies and states are critical and now there are laws (Evidence Act, Geospatial Data Act, Executive Orders on federal data being open and sharable)
- Geospatial data services are **evolving** and varies widely
- Data driven decision making should be powered by **TRUSTED** data

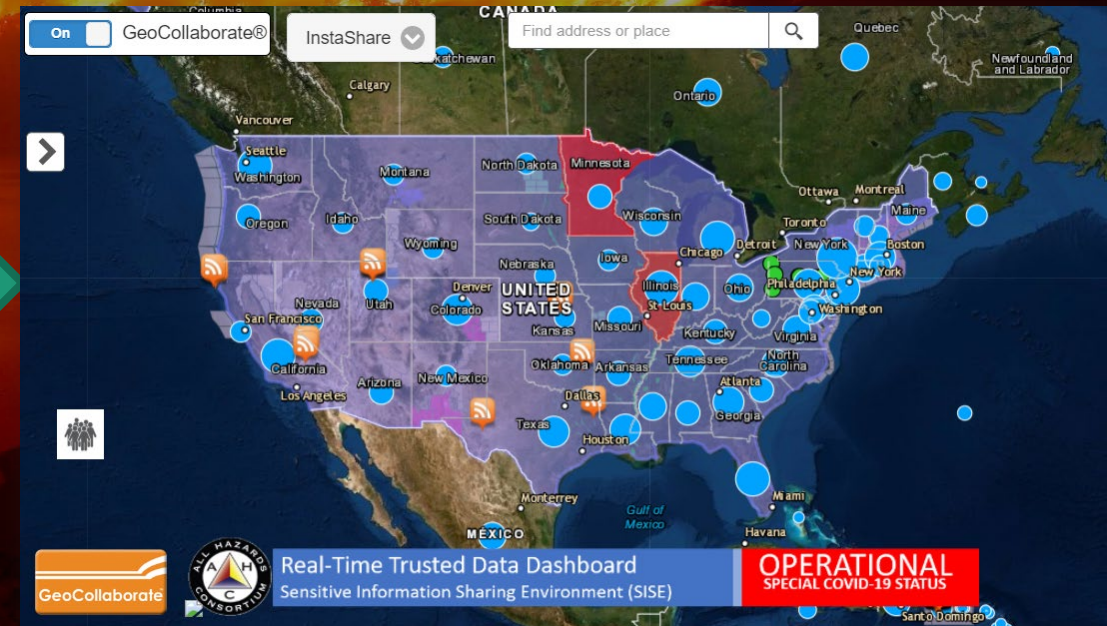
PPT | Web Browsers & Screen Sharing

Many browser windows look like this

fsapps.nwgc.gov/afm/gisdata.php

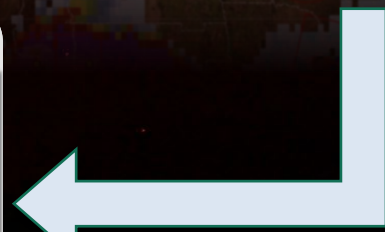
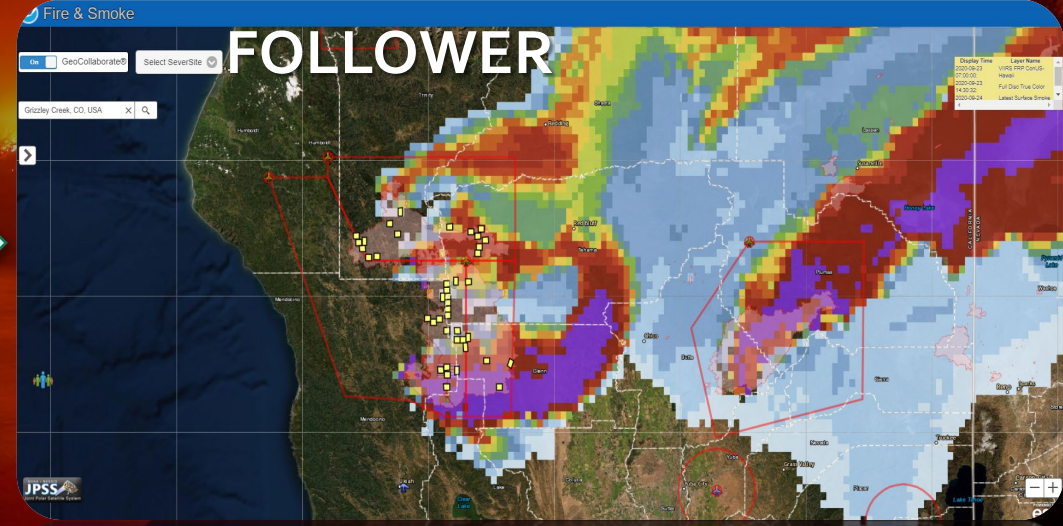
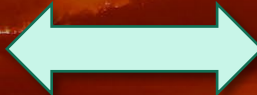
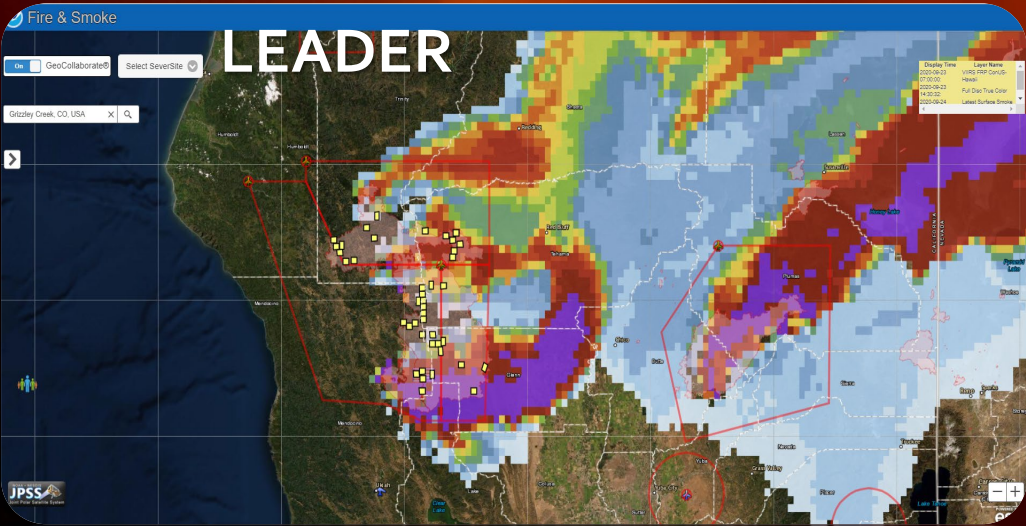
Graphical Tropical Weather Outlooks | Active Storms | Marine Forecasts

GeoCollaborate: Making the Complex...Simple



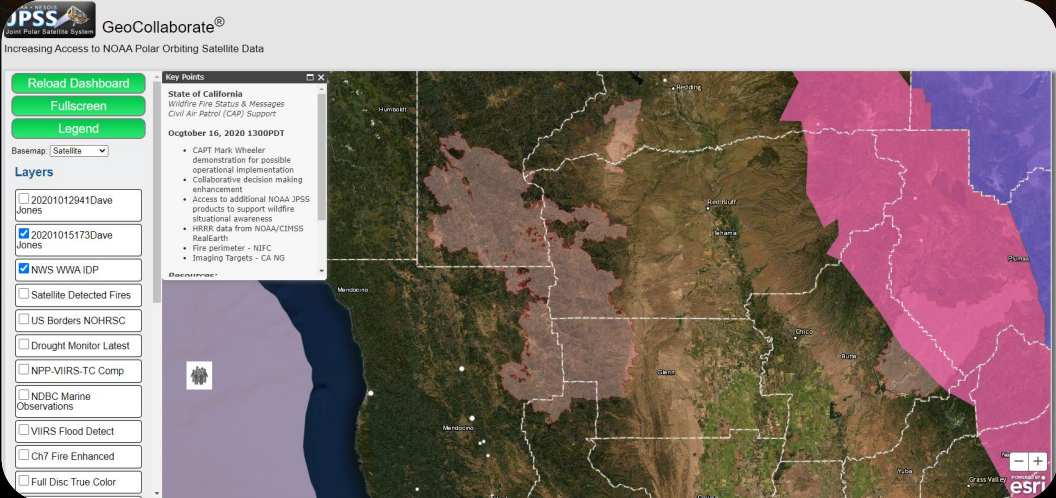
Deliver Trusted Data from disparate sources, in real-time, onto any map

GeoCollaborate | Putting Data to Work



COLLABORATIVE DASHBOARD

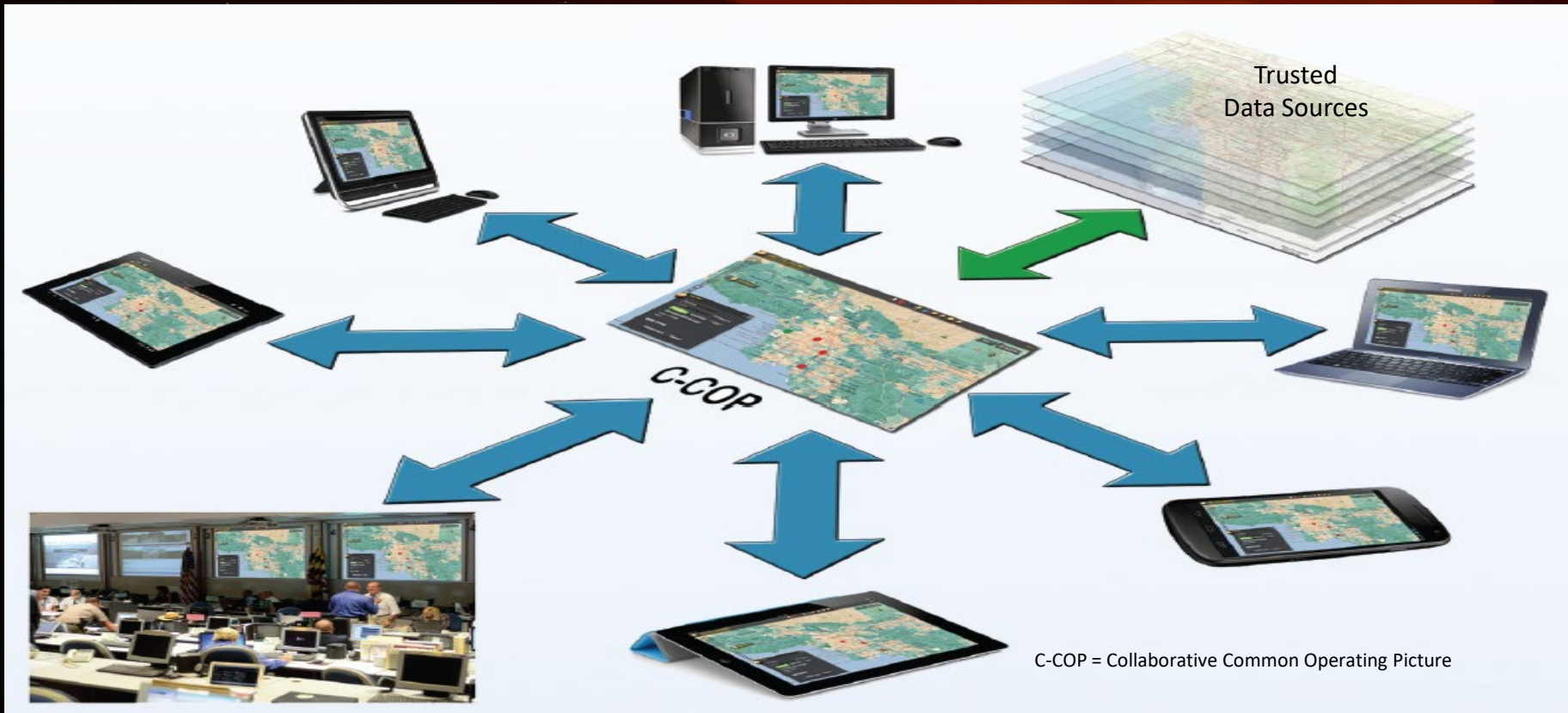
Geographic location
(Area of Interest & Data Layers)
can be selected by
individual user



GeoCollaborate as an Innovation



- Allows easy sharing of disparate data across devices, platforms in real-time, using low bandwidth
- Placing all participants synchronized on the same map at the same time (not screen sharing)
- No additional hardware footprint or installation of software needed
- Access and share data from RealEarth, nowCOAST, NWS IDP, Federal Agencies, AGOL, Esri Hub, Portals,



This is how a partnership works...

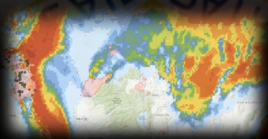


FIRE & SMOKE INITIATIVE
STORMCENTER COMMUNICATIONS

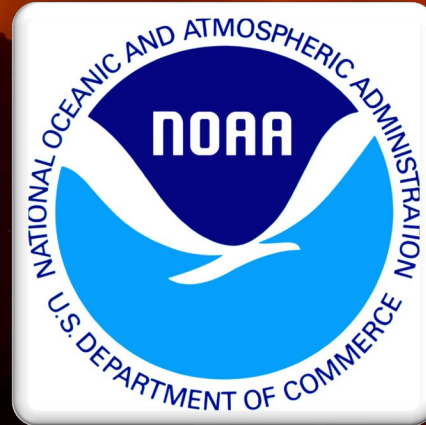
22-Sept-2020



CAPT Mark Wheeler



22-Sept-2020



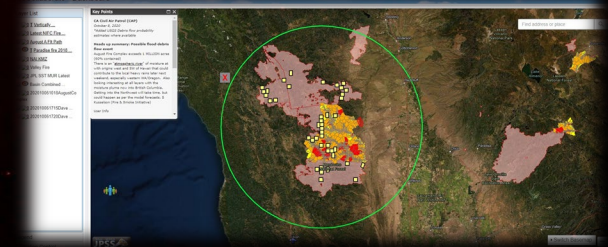
ESRL Boulder, CO

23-Sept-2020



Fire & Smoke Team

25-Sept-2020



Dave Jones
dave@stormcenter.com

Rapid Training Implementation



Training set up for the next day...
For three CA CAP CAPTs

Voice of: CAPT Mark Wheeler
CA Civil Air Patrol (CAP)

7-45

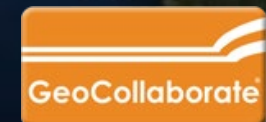
Rapid Training & Implementation

In just two days we were delivering HRRR Smoke model data, GOES-17 and JPSS data to CA CAP



Voice of: CAPT Mark Wheeler
CA Civil Air Patrol (CAP)

7-45





FIRE & SMOKE INITIATIVE

STORMCENTER COMMUNICATIONS

☒ On

GeoCollaborate®

Select SeverSite

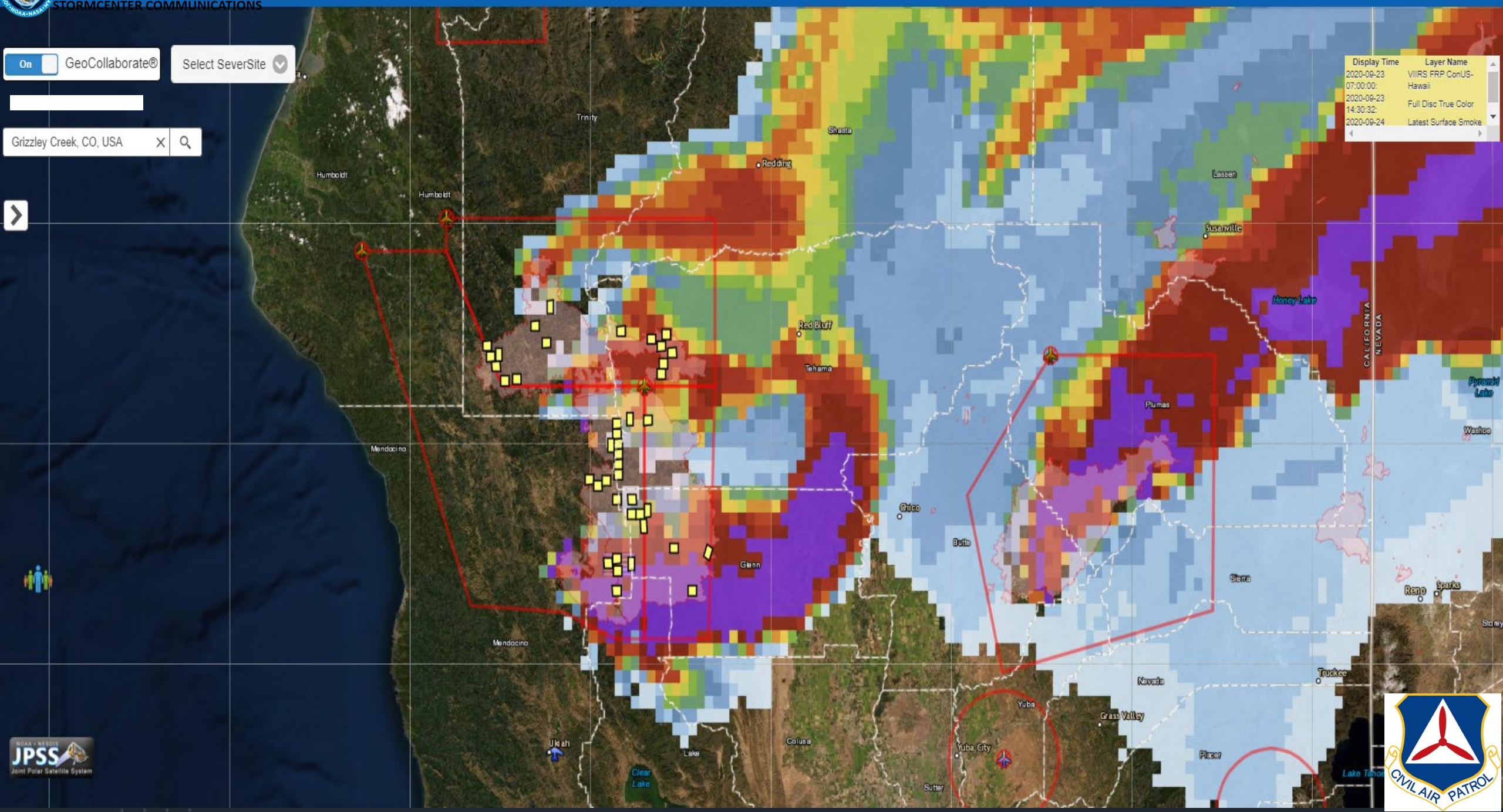
Grizzly Creek, CO, USA

X

Q



Display Time	Layer Name
2020-09-23 07:00:00	VIIRS FRP ConUS-Hawaii
2020-09-23 14:30:32	Full Disc True Color
2020-09-24	Latest Surface Smoke



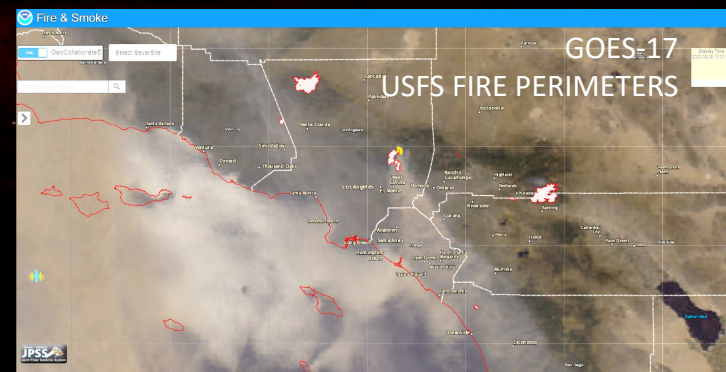
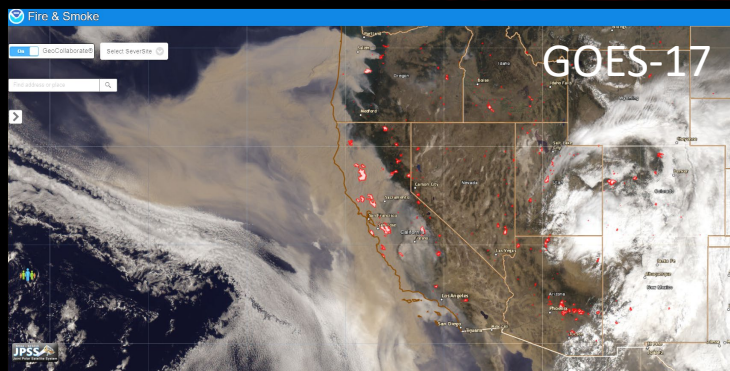
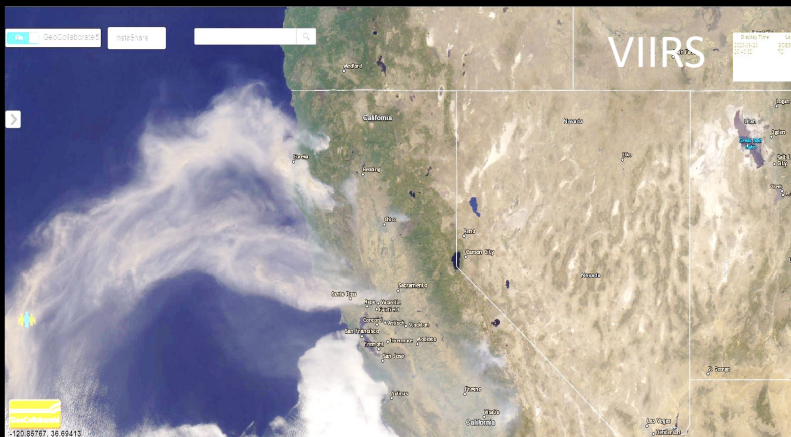
Fire & Smoke Initiative



Actively working to deliver NOAA data into decision making environments through GeoCollaborate through:

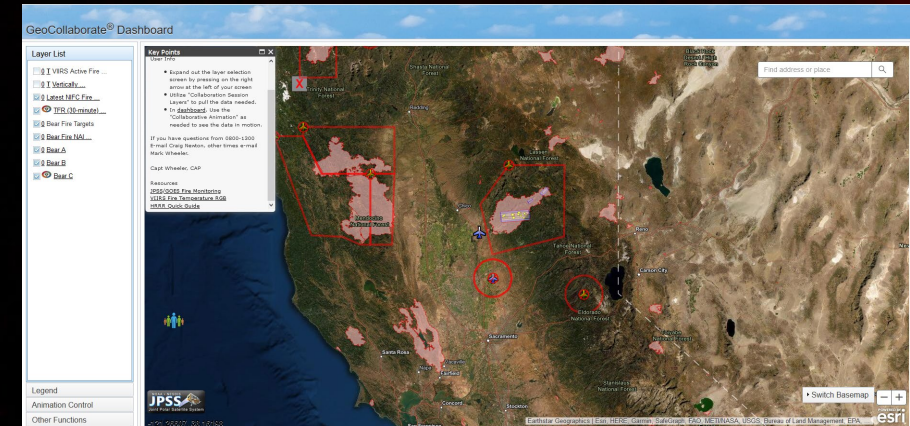
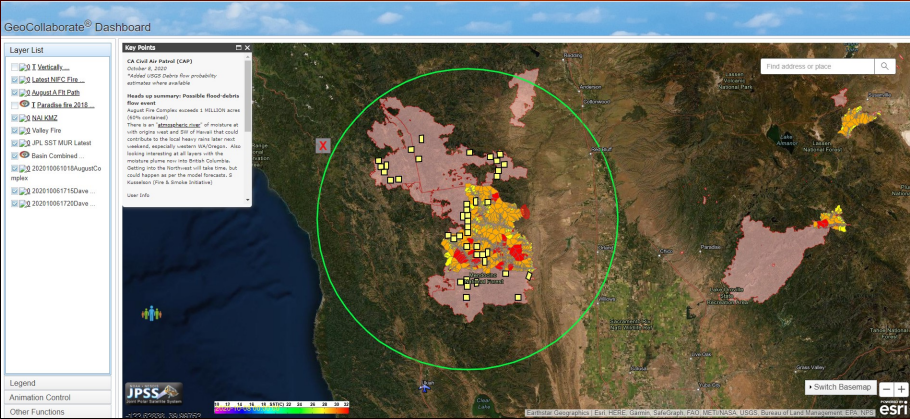
- **Fire & Smoke Initiative**

River Ice & Flooding Initiative



Increase the use and understanding of NOAA satellite data for decision makers

By evening of Sept 24, 2020 CA CAP was using GeoCollaborate operationally to help fight CA wildfires



WM

Wheeler, Mark C Capt <Mark.Wheeler@cawg.cap.gov>

To Dave Jones

Reply

Reply All

Forward

...

Fri 9/25/2020 10:20 AM

You replied to this message on 9/25/2020 11:16 AM.

Thank you!! Your timing is impeccable, I just presented it on the conference call and its being used as we speak to tailor our flight timing for today!

My PIO was also hoping to get your info and who have been involved along with their affiliation (NOAA, University of Wisconsin, etc) so that way we can include it in our internal and external press releases.

Capt Mark Wheeler, CAP

California Wing Homeland Security Officer

California Wing Air Force Mission Support Officer

(C) 951.742.1784

Civil Air Patrol, U.S. Air Force Auxiliary

Thank you!! Your timing is impeccable, I just presented it on the conference call and its being used as we speak to tailor our flight planning for today!

CAPT Mark Wheeler, CAP

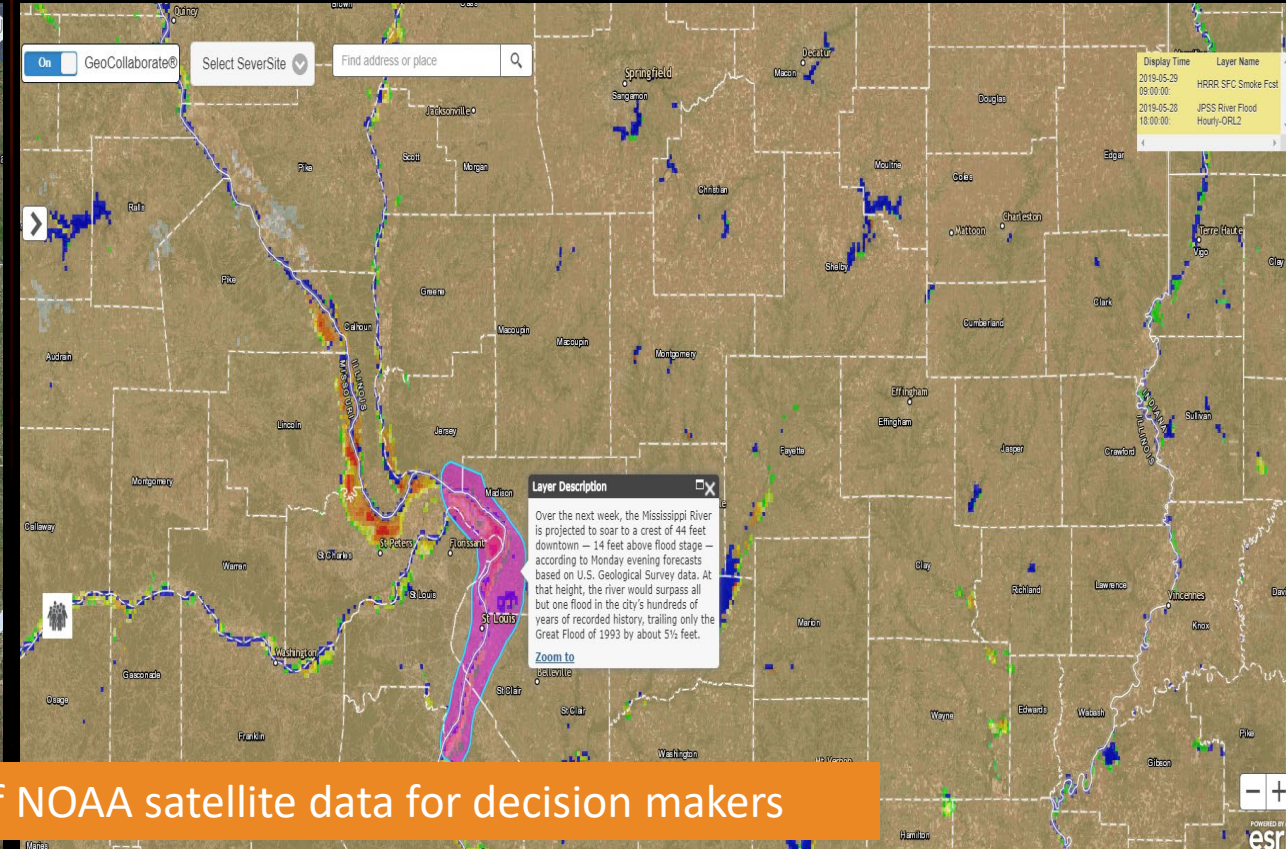
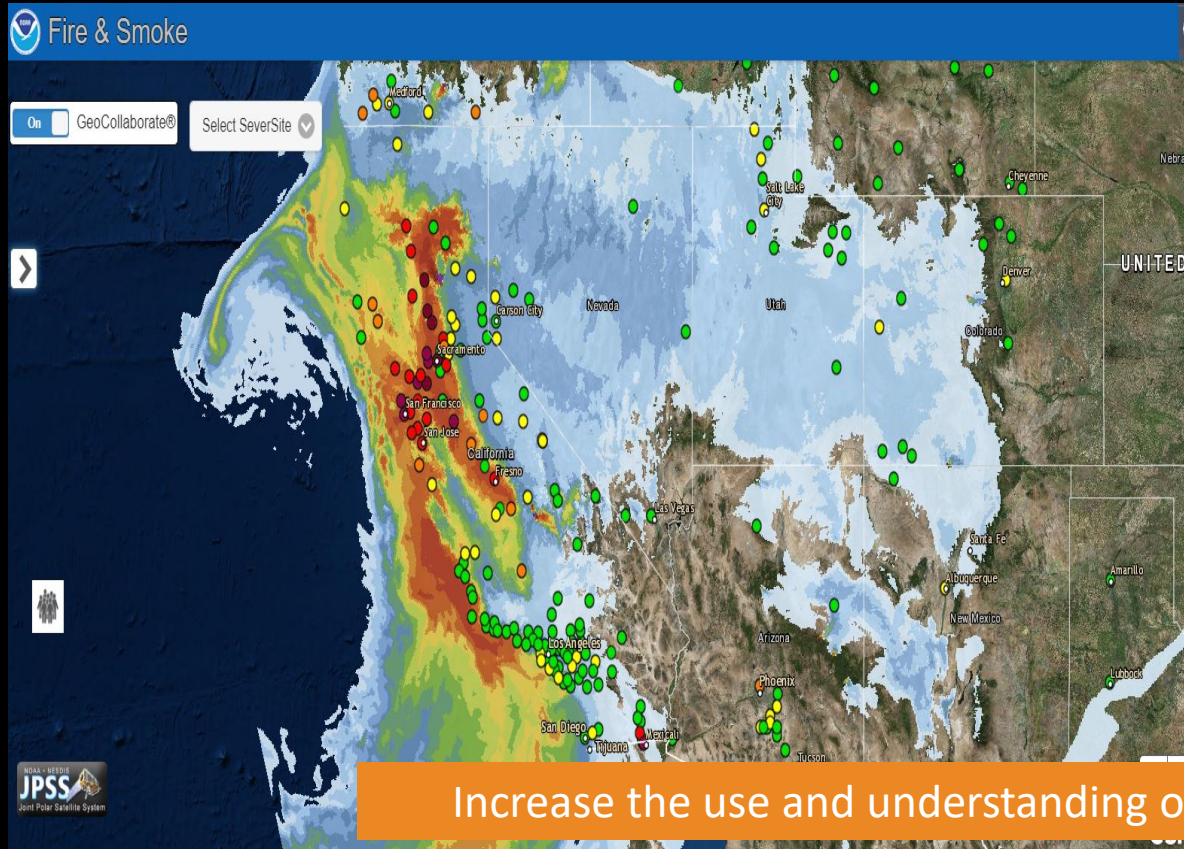
Fire & Water



Actively working as a prime contractor with NOAA (JPSS Program) to use GeoCollaborate within:

- Fire & Smoke Initiative
- River Ice & Flooding Initiative

Recently Expanded to Tropical Storms & Hurricanes



Increase the use and understanding of NOAA satellite data for decision makers

LINKS TO VIDEOS OF INTEREST



RIVER ICE & FLOODING INITIATIVE
STORMCENTER COMMUNICATIONS



FIRE & SMOKE INITIATIVE
STORMCENTER COMMUNICATIONS

The following links provide additional information on Dave's presentation & the JPSS Satellite System

California CAP Wildfire Support – Sept 2020

<https://youtu.be/J4qpSpEpflg>

The Promise of JPSS

<https://youtu.be/eulPPfwexaE>



THANK YOU – NOW TIME FOR THE LIVE EXERCISE